

# Designing and Implementing Solutions with Microsoft BizTalk Server 2000, Enterprise Edition

The Questions in this guide are arranged according to Microsoft Exam Objectives. The whole study guide is divided into seven parts.

Part Name	Questions
<b>Part 1</b> Planning and Designing BizTalk Server 2000 Solutions	16
<b>Part 2</b> Installing BizTalk Server 2000	8
<b>Part 3</b> Building Document Interchanges	37
<b>Part 4</b> Creating Auxiliary Components for BizTalk Server Solutions	7
<b>Part 5</b> Administering BizTalk Server Solutions	17
<b>Part 6</b> Creating Schemas and Transformations	8
<b>Part 7</b> Implementing Business Processes by using BizTalk Orchestration Designer	7

## Part 1 Planning and Designing BizTalk Server 2000 Solutions

### Question 1.

You are the network administrator for your company. The company recently decided to implement BizTalk Server 2000 to provide business-to-business (B2B) integration with its trading partners. A new administrator, Brian, has been hired to assist in the installation and administration of the BizTalk Server group. During the integration, test documents are being submitted by the trading partners to the BizTalk server for processing. You want Brian to locate and troubleshoot all documents that arrive but fail to process. However, when he attempts to access BizTalk Server Administration the following error message is received:

"Instances of MicrosoftBizTalkServer\_Group cannot be enumerated: Access is denied to the BizTalk Server Administration console due to a failure in the authentication process."

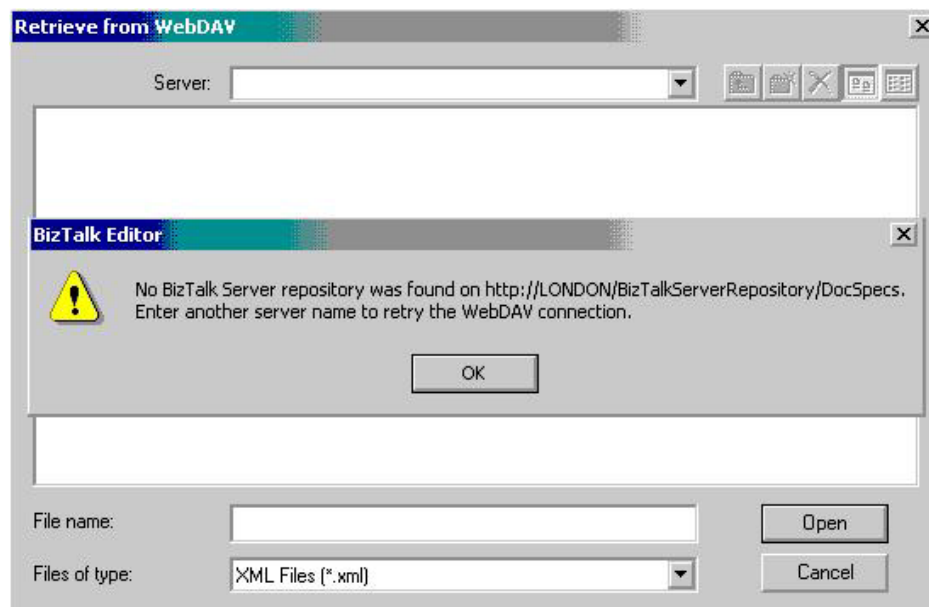
You are able to successfully access the console using your user account, and want to ensure that Brian has the ability to access the desired documents. What should you do?

- A. Select Windows Authentication Only for the SQL Server Login Properties
- B. Add Brian's user account to the BizTalk Server Administrators group.
- C. Add Brian's user account to the BizTalk Server Report Users group.
- D. Add Brian's user account to the Windows 2000 Administrators group.

**Answer: B**

### Question 2.

You are the BizTalk administrator for your company. You are using BizTalk Editor to create a new document specification based upon a standard XML document format, CommonPO.xml. When you attempt to access the WebDAV repository on the server LONDON you receive the results as shown below:



You verify that a connection exists to the server and that the WebDAV repository exists on this computer. You need to access the document in the WebDAV repository to create the new specification. What should you do?

- A. Open Internet Services Manager. Expand the Default Web site. Access the BizTalkServerRepository Properties page and select the Read permission check box on the Virtual Directory tab.
- B. Open Internet Services Manager. Expand the Default Web site. Access the BizTalkServerRepository Properties page and select the Directory browsing permission check box on the Virtual Directory tab.
- C. Open Internet Services Manager. Expand the Default Web site. Access the BizTalkServerRepository Properties page and select the Log visits check box on the Virtual Directory tab.
- D. Open Internet Services Manager. Expand the Default Web site. Access the BizTalkServerRepository Properties page and select the Index this resource check box on the Virtual Directory tab.
- E. Open Internet Services Manager. Expand the Default Web site. Access the BizTalkServerRepository Properties page and enable Anonymous access on the Directory Security tab.

**Answer: A**

**Question 3.**

You are the business-to-business (B2B) architect for Johansson Fixtures and are implementing BizTalk Server 2000 to integrate inter-company processes. Johansson Fixtures sends confidential data to a number of trading partners and utilizes the Internet to link to these organizations. Secure Sockets Layer (SSL) is used to provide a secure channel for transmission of data. The company requires that all confidential information that is embedded must be protected from alteration. Additionally, the company's trading partners need the guarantee of authenticity that the information came from Johansson Fixtures. What should you do?

- A. Configure your company's BizTalk Server to use a signed certificate, which is verified against the trading partners' certificate.
- B. Configure your company's BizTalk Server to use a signed certificate, which is verified against Johansson Fixture's certificate.
- C. Configure your BizTalk Server to use an encrypted certificate, which is verified against the trading partners' certificate.
- D. Configure your company's BizTalk Server to use an encrypted certificate, which is verified against Johansson Fixture's certificate.

**Answer: B**

**Question 4.**

You are the BizTalk architect for your company. The company distributes plumbing parts to a number of large home improvement retailers in North America. Your company wants BizTalk Server 2000 configured to receive electronic purchase orders from a large regional trading partner. The trading partner utilizes BizTalk Server 2000 for business-to-business (B2B) integration. The firewall administrator at the trading partner requires that port 80 be used for the transmission of the purchase orders. You must develop a BizTalk Server solution to receive electronic purchase orders from this trading partner. It is important that the solution optimize your BizTalk Server deployment. In addition, it is critical that no purchase orders are lost in the event of a server failure.

How should you configure BizTalk Server 2000 to accommodate these business requirements when receiving the purchase order documents?

- A. Create an ASP page to receive the purchase orders.  
Configure the Web site to accept only HTTP transmissions.  
Configure the Web site to call the SubmitSync method of the Interchange interface when a document is received.
- B. Create an ASP page to receive the purchase orders.

Configure the Web site to accept only HTTP transmissions.

Configure the Web site to call the Submit method of the Interchange interface when a document is received.

- C. Create a File receive function. Configure the receive function to poll a directory located on the trading partner's specified hard drive.
- D. Create a Message Queuing receive function. Create a private queue named RecPO. Configure the receive function polling location as Direct=OS:.\private\$\RecPO.

**Answer: B**

**Question 5.**

You are the BizTalk administrator for your company. You are using BizTalk Editor to create a new document specification based upon a standard XML document format, CommonShippingOrder.xml. When you attempt to access the WebDAV repository on the server LONDON you receive the results as shown below:



You verify that a connection exists to the server and that the WebDAV repository exists on this computer. You need to access the document in the WebDAV repository to create the new specification. What should you do?

- A. Open Internet Services Manager. Expand the Default Web site. Access the BizTalkServerRepository Properties page and select the Read permission check box on the Virtual Directory tab.
- B. Open Internet Services Manager. Expand the Default Web site. Access the BizTalkServerRepository Properties page and select the Directory browsing permission check box on the Virtual Directory tab.
- C. Open Internet Services Manager. Expand the Default Web site. Access the BizTalkServerRepository Properties page and select the Log visits check box on the Virtual Directory tab.
- D. Open Internet Services Manager. Expand the Default Web site. Access the BizTalkServerRepository Properties page and select the Index this resource check box on the Virtual Directory tab.
- E. Open Internet Services Manager. Expand the Default Web site. Access the BizTalkServerRepository Properties page and enable Anonymous access on the Directory Security tab.

**Answer: B**

**Question 6.**

You are the BizTalk Server administrator for your company. Your manager has instructed you to secure the exchange of documents with your trading partner. You want to ensure the encryption of all outgoing documents. What should you do?

- A. Install the company's client certificate in the default certificate store.
- B. Install the company's client certificate in the Certificates (Local Computer), BizTalk store.
- C. Install the company's computer certificate in the Certificates (Local Computer), BizTalk store.
- D. Install the company's computer certificate in the Certificates (Local Computer), Personal store.
- E. Install the company's server certificate in the Certificates (Local Computer), BizTalk store.
- F. Install the company's server certificate in the Certificates (Local Computer), Personal store.
- G. Install the trading partner's certificate in the Certificates (Local Computer), BizTalk store.
- E. Install the trading partner's certificate in the Certificates (Local Computer), Personal store.

**Answer: G**

**Question 7.**

You are BizTalk Developer of your company. The company is implementing BizTalk Server 2000 to integrate B2B processes with those of a trading partner. The trading partner will transmit purchase order documents to your BizTalk Server using a comma-separated flat-file format. Carriage Returns are used to wrap the data in the document to improve readability. Document text that is comma-separated, such as addresses and contact names, are enclosed in double quotes to support parsing. Each complete record is followed by an asterisk.

You are creating a specification that will be used to translate the purchase order documents. You must select the required configurations for each record and field in the specification. Select the appropriate settings from Settings and place them under the correct tree location:

**Settings:**

Set Default Record Delimiter to \* (0x2a)  
Set the Wrap Character to CR (0xd)  
Set Default Field Delimiter to , (0x2c)  
Set the Wrap Character to Double quotes  
Set Standard to XML  
Configure the Skip Carriage Return to NO  
Define the End Position property  
Set Default Field Delimiter to TAB (0x9)  
Configure the Skip Carriage Return property to YES  
Define the Start Position property  
Set Default Record Delimiter to CR (0xd)  
Set Standard to X12  
Set Standard to Custom

**Tree:**

REFERENCE TAB  
PARSE TAB

**Answer:**

**REFERENCE TAB**

- Set Standard to Custom
- Set Default Record Delimiter to \* (0x2a)
- Set Default Field Delimiter to , (0x2c)

## PARSE TAB

- Configure the Skip Carriage Return property to YES
- Set the Wrap Character to Double quotes

### Question 8.

You are one of three BizTalk Server administrators for your company. Due to security concerns, the company's trading partner is implementing the encryption of all order and invoice documents sent to your BizTalk server. You must configure the decryption of these incoming documents. What should you do?

- A. Install the company's client certificate in the default certificate store.
- B. Install the company's client certificate in the Certificates (Local Computer), BizTalk store.
- C. Install the company's computer certificate in the Certificates (Local Computer), BizTalk store.
- D. Install the company's computer certificate in the Certificates (Local Computer), Personal store.
- E. Install the trading partner's certificate in the Certificates (Local Computer), BizTalk store.
- F. Install the trading partner's certificate in the Certificates (Local Computer), Personal store.

**Answer: D**

### Question 9.

You are the BizTalk Server architect for your company. The company uses Enterprise Resource Planning (ERP) applications to support current operations. Manufacturing uses applications to support production, inventory, order processing, and shipping activities. Administration uses applications to support sales, purchasing, and forecasting activities. BizTalk Server 2000 is being deployed to integrate the business processes of all these applications. Four computers are available for the deployment. You decide to create a BizTalk Server group named ManuGroup that utilizes two BizTalk Server 2000 computers to integrate the manufacturing applications. Another BizTalk Server group named AdminGroup is created that utilizes two BizTalk Server 2000 computers to integrate the administration applications.

Your design must meet the following business requirements:

- Document tracking must be configured for inbound and outbound documents.
- Administration of both groups and servers must be allowed from any server in either group.
- The design must achieve optimal performance and allow new BizTalk Server 2000 computers to be added to the groups if needed.

What should you do?

- A. Place a central BizTalk Messaging Management database and the Shared Queue database on a BizTalk Server computer in the AdminGroup server group.  
Place the Tracking database on the second BizTalk Server computer in the AdminGroup server group.  
Place the Shared Queue database on a BizTalk Server computer in the ManuGroup server group.  
Place the Tracking database on the second BizTalk Server computer in the ManuGroup server group.
- B. Place the BizTalk Messaging Management database and the Shared Queue database on a BizTalk Server computer in the AdminGroup server group.  
Place the Tracking database on the second BizTalk Server computer in the AdminGroup server group.  
Place the BizTalk Messaging Management database and the Shared Queue database on a BizTalk Server computer in the ManuGroup server group.  
Place the Tracking database on the second BizTalk Server computer in the ManuGroup server group.
- C. Place the Tracking database and the Shared Queue database on a BizTalk Server computer in the AdminGroup server group.

Place the BizTalk Messaging Management database on the second BizTalk Server computer in the AdminGroup server group.

Place the Tracking database and the Shared Queue database on a BizTalk Server computer in the ManuGroup server group.

Place the BizTalk Messaging Management database on the second BizTalk Server computer in the ManuGroup server group.

- D. Place the Tracking database and the BizTalk Messaging Management database on a BizTalk Server computer in the AdminGroup server group.

Place the Shared Queue database on the second BizTalk Server computer in the AdminGroup server group.

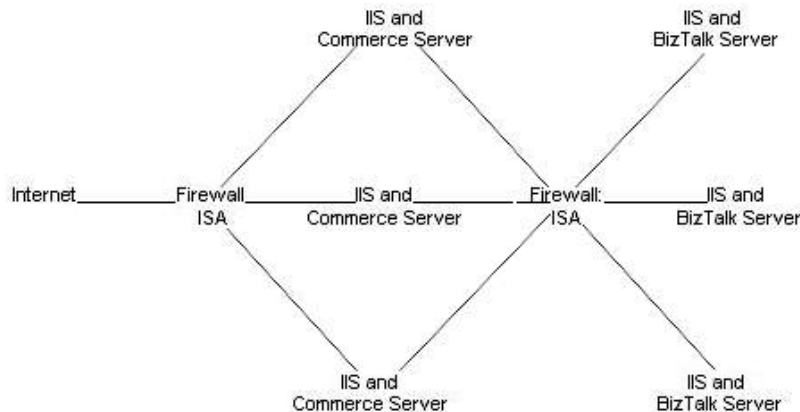
Place the Tracking database and the BizTalk Messaging Management database on a BizTalk Server computer in the ManuGroup server group.

Place the Shared Queue database on the second BizTalk Server computer in the ManuGroup server group.

**Answer: A**

**Question 10.**

You are the BizTalk administrator for your company. The company uses BizTalk Server 2000 to integrate business processes with its trading partners. You are configuring the document receipt process for your BizTalk Server 2000 implementation. A portion of the company's network is shown below:



The Internet Information Server (IIS) and Commerce Server data farm will receive documents from the trading partners over HTTPS. Active Server Pages (ASP) pages on the IIS servers will call directly into the BizTalk servers by using the SubmitSync method of the Interchange interface. You must configure communications between the data farms. What should you do?

- A. Request the Firewall administrator restrict communications between the two data farms to port 80.
- B. Request the Firewall administrator restrict communications between the two data farms to port 1801.
- C. Allow the use of DCOM components on BizTalk Server group to make calls between the two server farms.
- D. Disallow the use of COM components on BizTalk Server group to make calls between the two server farms.

**Answer: A**

**Question 11.**

Smithfield Design is implementing BizTalk Server 2000 to integrate company applications and data. The BizTalk server will not provide access to or from Internet resources. However, you must secure the BizTalk databases from unauthorized access. These databases will be stored using Microsoft SQL Server 2000. What should you do?

- A. Configure SQL Server 2000 for Windows Authentication.
- B. Configure SQL Server 2000 for SQL Server Authentication.
- C. Configure SQL Server 2000 for Mixed Mode Authentication.
- D. Configure BizTalk Server 2000 for Windows Authentication.
- E. Configure BizTalk Server 2000 for Mixed Mode Authentication.

**Answer: C**

**Question 12.**

You are the BizTalk developer for your company. You are configuring BizTalk Messaging for a new implementation. To support a heavy volume of incoming flat-file documents, you decide that all receive functions will be performed on computers separate from the processing BizTalk Server computers. The company requires that your design maintain fault tolerance. What should you do?

- A. Configure one BizTalk Server in the group to receive all incoming documents.
- B. Configure two BizTalk Servers in the group to receive all incoming documents.
- C. Implement Cluster Service on two BizTalk Server computers. Configure this cluster node to receive all incoming documents.
- D. Implement Windows Network Load Balancing Service (NLBS) on two BizTalk Server computers. Configure this NLBS node to receive all incoming documents.

**Answer: C**

**Question 13.**

You are the BizTalk administrator for your company. You need to configure BizTalk Server to send confidential information to your trading partners. How can you configure BizTalk Server to communicate securely with these trading partners using existing certificates?

- A. Configure all channels to verify the encryption certificate against your company's certificate.
- B. Configure all channels to verify the encryption certificate against each trading partner's certificate.
- C. Configure all channels to verify the signature certificate against each trading partner's certificate.
- D. Configure all channels to verify the signature certificate against your company's certificate.

**Answer: B**

**Question 14.**

You are the BizTalk Server architect for your company. The company has two distinct divisions, Operations and Sales. Each division has multiple business processes with associated applications that need to be integrated. The company wants you to deploy BizTalk Server 2000 to integrate the business processes across the divisions. Two computers are available for the deployment. You decide to create a BizTalk Server group on one computer for the Operations division. All applications for the Operations division will be integrated by using this group. Another BizTalk Server group will be created on the second computer to integrate applications for the Sales division.

Your design must meet the following business requirements:

- Document tracking must be configured for inbound and outbound documents.
- Administration of both groups and servers must be allowed from any server in either group.



- The design must achieve optimal performance and allow new BizTalk Server 2000 computers to be added to the groups if needed.

What should you do?

- Create a separate Tracking database for each BizTalk Server group.  
Create a separate Shared Queue database for each BizTalk Server group.  
Create a central BizTalk Messaging Management database for use by both BizTalk Server groups.
- Create a separate Tracking database for each BizTalk Server group.  
Create a separate Shared Queue database for each BizTalk Server group.  
Create a separate BizTalk Messaging Management for each BizTalk Server group.
- Create a separate Tracking database for each BizTalk Server group.  
Create a central Shared Queue database for use by both BizTalk Server groups.  
Create a separate BizTalk Messaging Management for each BizTalk Server group.
- Create a central Tracking database for use by both BizTalk Server groups.  
Create a central Shared Queue database for use by both BizTalk Server groups.  
Create a central BizTalk Messaging Management database for use by both BizTalk Server groups.

**Answer: A**

**Question 15.**

You are the BizTalk developer for your company. The company distributes plumbing parts to a number of large home improvement retailers in North America. Your company wants BizTalk Server 2000 configured to receive electronic purchase orders from a large regional trading partner. The trading partner utilizes BizTalk Server 2000 for business-to-business (B2B) integration. The firewall administrator at the trading partner opens port 80 for the transmission of the purchase orders. You must develop a BizTalk Server solution to receive electronic purchase orders from this trading partner. What should you do?

- Create a port that uses the HTTP transport type in BizTalk Messaging Manager. Configure a receive function to specify a location on a local hard disk to receive the documents.
- Create a port that uses the File transport type in BizTalk Messaging Manager. Configure a receive function to specify a location on a local hard disk to receive the documents.
- Create an ASP page to receive the purchase orders. Configure the Web site to accept only HTTPS transmissions. Configure the Web site to call the Submit method of the Interchange interface when a document is received.
- Create an ASP page to receive the purchase orders. Configure the Web site to accept only HTTP transmissions. Configure the Web site to call the Submit method of the Interchange interface when a document is received.

**Answer: D**

**Question 16.**

You are the BizTalk administrator for your company. The company's BizTalk developer has created a Microsoft Visual Basic COM component that submits shipping confirmation documents to your BizTalk Server computer, BTOOrder. These documents are in XML format and are distributed to your trading partners when orders are shipped. You must ensure that only authorized employees in the order fulfillment department can submit the shipping confirmation documents to this BizTalk Server computer. You take the following actions to accomplish this goal:

- Create a group on BTOOrder named OFDusers.
- Add all authorized user accounts to the OFDusers group.

There are no receive functions configured on BTOOrder. How can you prevent unauthorized users from sending documents to the BizTalk server? (Choose Three)

- A. Add the OFDusers group to the BizTalk Server Administrators group on BTOOrder.
- B. Add the group to the BizTalk Server Report Users group on BTOOrder.
- C. Use Component Services to enable role-based security for the BizTalk Server Interchange Application.
- D. Remove all other users and groups from BizTalk Server Administrators group.
- E. Configure Interchange SQL as the default database login.
- F. Make the login a member of the db\_datawriter database role.
- G. Remove any other users and groups from the BizTalk Server Report Users group.
- H. Add OFDusers to a role on the BizTalk Server Interchange Application.
- I. Associate the role with the Submit and Submit Sync methods of the Interchange interface.  
Create a Microsoft SQL Login for OFDusers.

**Answer: C, H & I**

## Part 2 Installing BizTalk Server 2000

### Question 1.

You are the BizTalk administrator for your company. You are installing BizTalk Server 2000 on five Windows 2000 Server computers. You are using Microsoft Windows Installer to perform a silent installation of BizTalk Server 2000 on the five computers. The Windows Installer package is placed on a Windows 2000 domain controller named EastDC1. A BizTalkInstall.ini file is placed on each computer.

To launch the BizTalk Server 2000 silent installation process on the first computer you type the following from a command prompt:

```
msiexec /I "\\EastDC1\Microsoft BizTalk Server.msi"  
/qb /Lv* "C:\Temp\install.log" INSTALLLEVEL  
ALLUSERS=1  
PIDKEY="AB1CDEDFGH2IJK3LMN45OPQR67"  
DSNCONFIG="C:\Temp\BizTalkInstall.ini"
```

What will be the result of this action?

- A. BizTalk Server 2000 will be installed on the computer.
- B. Only the BizTalk Server Tools will be installed on the computer.
- C. An error message will be generated requiring the PID value to be reentered with dashes.
- D. The computer will not have access to the installation information used by the setup wizard.

**Answer: B**

### Question 2.

You are the BizTalk administrator for your company and are performing an installation of BizTalk Server 2000. To prepare for the installation, you have installed Windows 2000 Server on the first computer that will be in the BizTalk Server group. While waiting for the installation files for BizTalk Server 2000 to be placed on the corporate FTP site, you begin the installation process by installing Microsoft SQL Server 7.0 on the computer. After completing these installations, you download BizTalk Server 2000 to a CD and attempt to begin the installation process by double-clicking the Setup icon. The installation process immediately aborts. You must correct your installation process to allow you to complete the installation of BizTalk Server 2000 on this computer. What should you do? (Choose two)

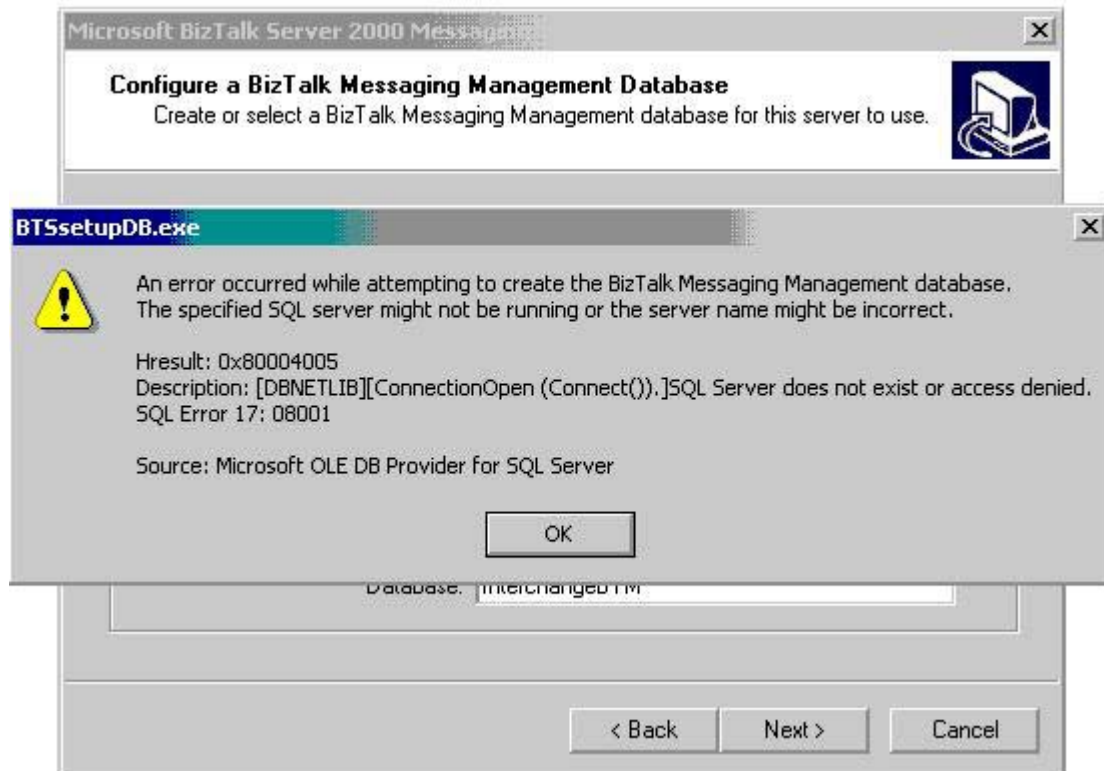
- A. Uninstall SQL Server 7.0 and install SQL Server 2000. Restart the BizTalk Server 2000 installation process.
- B. Install the SQL Server 7.0 Service Pack 2 on the computer. Restart the BizTalk Server 2000 installation process.
- C. Install VISIO on the computer. Restart the BizTalk Server 2000 installation process.
- D. Install the most recent Windows 2000 service packs and hotfixes. Restart the BizTalk Server 2000 installation process.
- E. Install Microsoft Message Queuing Services on the computer. Restart the BizTalk Server 2000 installation process.

**Answer: B & D**

### Question 3.

You are the BizTalk administrator for your company. You are installing BizTalk Server 2000 on a new Windows 2000 Server computer. The BizTalk Server 2000 computer will be the first member of the BizTalk Server group BizTalkGroup. The BizTalk Server 2000 implementation will make extensive use of XLANG schedules once deployed. The BizTalk databases are hosted on three Microsoft SQL 2000 computers. The BizTalk Messaging Management and Shared Queue databases will be hosted on one SQL Server computer. The Tracking and Orchestration Persistence databases will each be hosted on a separate SQL Server computer.

During the installation of the BizTalk Messaging Management database you receive the error as shown below:



You verify that the SQL server service is running and the username and password used for the connection are correct. You must correct your installation process to allow you to install BizTalk Server 2000 on this computer. What should you do? (Choose Two)

- A. Configure the SQL Server 2000 hosting the BizTalk Messaging Management and Shared Queue databases to use Mixed Mode authentication.
- B. Cancel the BizTalk Server 2000 installation. Reinstall Microsoft SQL Server 2000 on the target database computer.
- C. Configure the SQL Server 2000 hosting the BizTalk Messaging Management and Shared Queue databases to use Windows only Authentication.
- D. Stop and restart the SQL Server service.

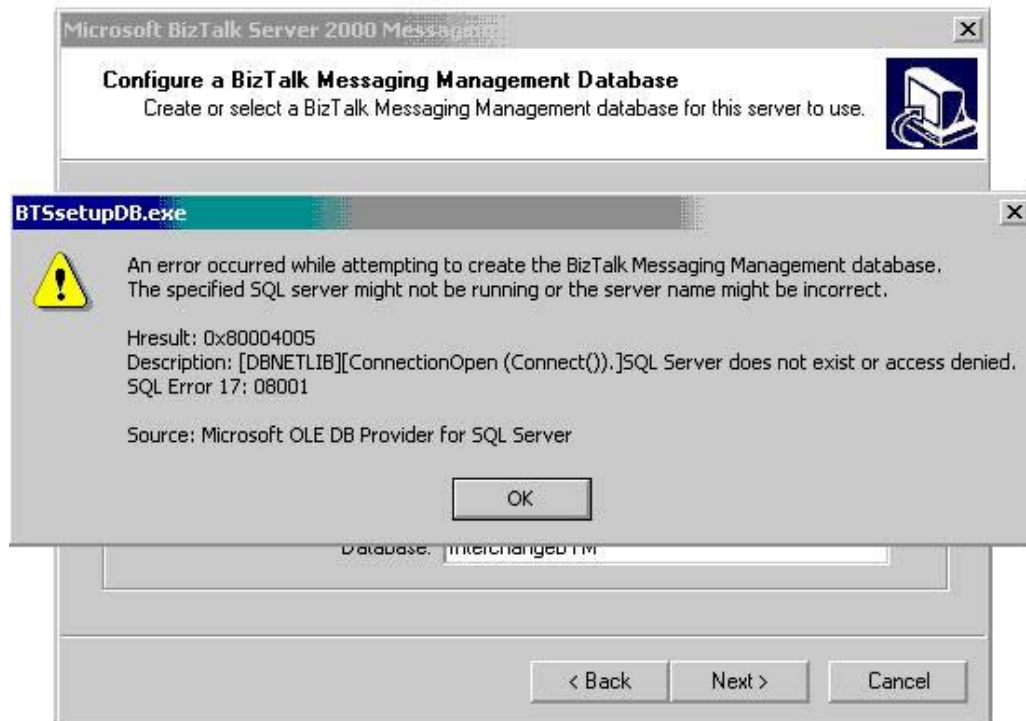
**Answer: A & D**

#### Question 4.

You are the BizTalk administrator for your company. You are installing BizTalk Server 2000 on a Windows 2000 Server computer that was previously used in a lab implementation. Both BizTalk Server 2000 and SQL Server 2000 were installed on the computer and removed after the testing

was completed. The BizTalk databases in the new installation will be hosted on this computer. The computer has been properly configured with the required software and services to support the new BizTalk Server 2000 implementation.

During the installation of the BizTalk Messaging Management database you receive the error as shown below:



You verify that the SQL Server service is running and that authentication is set to Mixed Mode (Windows Authentication and SQL Server Authentication). You must correct your installation process to allow you to install BizTalk Server 2000 on this computer. What should you do? (Choose Two)

- A. Remove the existing BizTalk Messaging Management, Tracking, Shared Queue, and Orchestration Persistence database files.
- B. Cancel the BizTalk Server 2000 installation. Reinstall Microsoft SQL Server 2000 on the BizTalk Server 2000 computer.
- C. Cancel the BizTalk Server 2000 installation. Install Microsoft Message Queuing on the BizTalk Server 2000 computer.
- D. Enter the correct username and password required to access the database.

**Answer: A & D**

#### **Question 5.**

You are a BizTalk architect of your company. BizTalk Server 2000 will be deployed at multiple company locations to integrate enterprise applications. The BizTalk Server 2000 implementation will include the extensive XLANG schedules. Document tracking will be enabled. BizTalk Server 2000 will be installed on windows 2000 compatible computers. You must develop the software list and installation configurations for distribution to remote locations that will deploy BizTalk Server 2000. Select the software versions and configurations that could be included in your software deployment list. Choose the software versions and configurations from the list and place them at appropriate position in the deployment list.

**Deployment List:**

Operating Systems and Configurations  
Database Software and Configurations  
Additional Software Required

**Software Versions:**

Internet Explorer 5.5  
Microsoft SQL Server 7.0 SP2  
FAT16  
Windows 2000 Advanced Server SP1  
Mixed Mode Authentication  
Microsoft SQL Server 7.0 SP1  
Microsoft SQL Server 6.5 SP2  
Windows 2000 Server SP2  
Windows NT 4.0 Server SP6  
Internet Explorer 4.0  
Internet Explorer 5.0  
FAT 32  
Microsoft SQL Server 2000  
NTFS File System  
Visio 2000 Enterprise Edition  
Message Queuing Services  
Visio 2000 Professional Edition  
IIS 4.0  
IIS 5.0  
Visio 2000 Standard Edition SR1A  
Windows 2000 Only Authentication

**Answer:**

**OPERATING SYSTEMS AND CONFIGURATIONS**

- Windows 2000 Advanced Server SP1
- Windows 2000 Server SP2
- NTFS File System
- Message Queuing Services

**DATABASE SOFTWARE AND CONFIGURATIONS**

- Microsoft SQL Server 2000
- Microsoft SQL Server 7.0 SP2
- Mixed Mode Authentication

**ADDITIONAL SOFTWARE REQUIRED**

- Visio 2000 Standard Edition SR1A
- Internet Explorer 5.0
- Internet Explorer 5.5

**Question 6.**

You are the BizTalk administrator for Strucker Products, an online janitorial supplies distributor. The company has experienced rapid growth since its inception five years ago. You want to install BizTalk Server 2000 to integrate the company's business-to-business (B2B) interactions with its trading partners. Strucker Product's corporate network is built upon a fiber optic backbone. BizTalk Server 2000 will be installed on three multiprocessor PIII Xeon processor machines, each containing 2-MB L2 Processor Cache. These computers will be connected to the network using multiple 100 Mbps network cards connected to 100 MB/s switch ports. Each computer is expected to receive 50 to 125 documents/second for processing. No other applications will run on these server computers. You must optimize the BizTalk server using the most economical manner. What should you do? (Choose three.)

- A. Install BizTalk Server 2000 Standard Edition.
- B. Install BizTalk Server 2000 Enterprise Edition.

- C. Configure a low setting (2) for the Maximum number of receive function threads allowed setting.
- D. Configure a high setting (80) for the Maximum number of receive function threads allowed setting.
- E. Configure a low setting (500) for the Time between BizTalk Server Scheduler calls setting.
- F. Configure a high setting (2400) for the Time between BizTalk Server Scheduler calls setting.

**Answer: B, D & E**

**Question 7.**

You are the network administrator for your company. The company is planning to implement BizTalk Server 2000 to facilitate business-to-business (B2B) transactions with its trading partners. Four server computers have been identified for use in this project. Two BizTalk Server computers will be configured as Web servers to receive documents from the trading partners. These computers will be configured as a BizTalk Server group. The two remaining computers use a shared-disk subsystem with fast connections for SQL database storage. All computers use the Microsoft Windows 2000 Advanced Server operating system. No receive functions will be configured. You must configure the BizTalk Server implementation for scalability and high availability. You want to protect BizTalk Server from hardware failure while maintaining the ability to receive and process documents if one server fails. This should be done in an economical manner. What should you do?

- A. Implement Cluster Service for the two Web servers.
- B. Implement Cluster Service for the two database servers.
- C. Use Windows Network Load Balancing Service for the two Web servers.
- D. Use Windows Network Load Balancing Service for the two database servers.

**Answer: B**

**Question 8.**

You are the network architect for Red-Plus Pharmaceuticals, which manufactures and distributes absorbent cotton products including dental rolls, elastic bandages, and cotton balls. The company is mature and additional growth is unlikely. You want to install a BizTalk Server 2000 computer to integrate the company's line of business applications, mainframe computer, and Windows 2000 domain environment.

Currently, your 100-Mbps local area network (LAN) operates at 72% capacity. You anticipate the dual-processor server used for BizTalk Server will receive between five and twelve documents/second for processing. No other applications will run on this server computer. You must optimize the BizTalk server in the most economical manner. What should you do? (Choose three.)

- A. Utilize BizTalk Server 2000 Standard Edition in your design.
- B. Utilize BizTalk Server 2000 Enterprise Edition in your design.
- C. Configure a low setting (2) for the Maximum number of receive function threads allowed setting.
- D. Configure a high setting (6) for the Maximum number of receive function threads allowed setting.
- E. Configure a low setting (200) for the Time between BizTalk Server Scheduler calls setting.
- F. Configure a high setting (2400) for the Time between BizTalk Server Scheduler calls setting.

**Answer: A, D & F**



## Part 3 Building Document Interchanges

### Question 1.

You are the BizTalk developer for your company. The company uses BizTalk Server 2000 to receive purchase orders from its trading partners. BizTalk Server 2000 processes the purchase orders and submits these documents to an internal order fulfillment application. The purchase order documents will be submitted using the X12 850 format. The document is processed by the BizTalk Server computer and must be submitted to the internal application using a custom XML format. You want to ensure that the documents are properly received, processed, and submitted to the application using BizTalk Server 2000. What should you do? (Choose Three)

- A. Create custom parser component.
- B. Create an envelope using a custom XML format.
- C. Create an envelope using an X12 format.
- D. Configure a specification reference.
- E. Create custom serializer component.
- F. Select the envelope in the messaging port to the internal application.
- G. Specify the outbound envelope name in the submit call parameters.
- H. Specify the inbound envelope name in the submit call parameters.

**Answer: B, D & F**

### Question 2.

You are the BizTalk developer for your company. The company distributes plumbing parts to a number of large home improvement retailers in North America. Your company wants to use BizTalk Server 2000 to integrate its fulfillment system with the purchasing system of a large regional trading partner. The partner wants to transmit electronic purchase orders (POs) from its EDI network to your BizTalk Server computer using a Value Added Network (VAN). These documents will be batched and sent compressed to a directory, where they will be picked up for processing by BizTalk Server 2000.

You want to configure your BizTalk Server to decompress these documents before they are processed. What should you do? (Select Three)

- A. Create a component in IBTSCustomProcess Interface.
- B. Create a component in IBTSAppIntegration Interface.
- C. Create a component in IPipelineComponent Interface.
- D. Create a component in BizTalkParserComponent Interface.
- E. Select the preprocessor in the file receive function using BizTalk Server Administration.
- F. Register the preprocessor component.
- G. Select the preprocessor in the file receive function using BizTalk Messaging Manager.
- H. Select the preprocessor in the file receive function using BizTalk Mapper.

**Answer: A, E & F**

### Question 3.

You are the BizTalk Server developer for your company. The company has a large number of trading partners that submit purchase order documents. Currently these documents are entered into the company's sales order system by hand. You want to use BizTalk Server 2000 to receive purchase orders from the company's trading partners.

All trading partners agree to use HTTP to send purchase order (PO) documents to your Web site, which is hosted on a single Internet Information Services (IIS) server. BizTalk Server 2000 is also



installed on this computer. A separate computer with Microsoft SQL Server 2000 installed is configured to host the BizTalk database.

You need to configure the existing BizTalk Server deployment for maximum reliability. What should you do?

- A. Create an XLANG schedule that receives purchase order documents synchronously from an ASP page and processes them. Increase the Connection Timeout in IIS above the default of 900.
- B. Implement a Message Queuing receive function to receive the documents from a messaging queue.
- C. Create an ASP page to receive purchase order documents. Use the SubmitSync method of the Interchange interface to retrieve the documents from the ASP page and submit them to BizTalk Server 2000.
- D. Create an ASP page to receive purchase order documents. Use the Submit method of the Interchange interface to retrieve the documents from the ASP page and submit them to BizTalk Server 2000.

**Answer: D**

#### **Question 4.**

You are a BizTalk Server developer for Red-Plus Pharmaceuticals company. You are deploying BizTalk Server 2000 to receive purchase order (PO) documents from a variety of trading partners. You want to configure BizTalk Server 2000 to allow these trading partners to send PO documents in a variety of formats. You must design your BizTalk Server solution to receive PO documents as attachments to e-mail messages. What should you do?

- A. Open BizTalk Messaging Manager. Select New -> Messaging Port. In the New Messaging Port wizard, select the SMTP transport type. Configure the Address parameter with the trading partner's e-mail address.
- B. Open BizTalk Messaging Manager. Select New -> Messaging Port. In the New Messaging Port wizard, select the SMTP transport type. Configure the Address parameter with the BizTalk Server e-mail address.
- C. Open BizTalk Messaging Manager. Select New -> Messaging Port. In the New Messaging Port wizard, select the Application Integration Component for the primary transport type. Associate the COM component that will receive the documents.
- D. Create a new mailbox on the Microsoft Exchange Server 2000 computer for your company. Implement an Exchange server script that calls the Submit method of the Interchange interface when a PO document is received. Advise the trading partner of this mailbox address.
- E. Open BizTalk Messaging Manager. Select New -> Messaging Port. In the New Messaging Port wizard, select the File transport type. Identify the hard drive file location used by the trading partner to store PO documents.
- F. Create an ASP page for each trading partner wishing to participate in the BizTalk Server business process integration.

**Answer: D**

#### **Question 5.**

You are the BizTalk developer for Advanced Aeronomics. You are implementing BizTalk Server 2000 to automate the ordering and invoicing business processes between your company and a trading partner, Smithfield Supplies. Smithfield Supplies will receive the PO documents and submit an invoice using XML for payment if the desired parts are available. A sample invoice document is shown below:

```

- <Invoice>
  <InvoiceHeader Date="11-11-2001" Number="A53256"
    PONumber="111101353" ShipDate="11-14-2001" />
  - <Seller>
    <Address Name="Smithfield Supplies" Address1="555_Oak_Avenue"
      Address2="ATTN:_ACCT_PAYABALES" City="Smithfield" State="MO"
      PostalCode="55522" Country="USA" />
    </Seller>
  - <Buyer>
    <Address Name="Advanced Aeronomics" Address1="333_Main
      Street" City="Clay" State="AL" PostalCode="35235"
      Country="USA" />
    </Buyer>
    <InvoiceTermsOfSale Amount="1.0" Description="Net30" />
    <InvoiceTermsOfSale Amount="2.0" Description="2/10Net30" />
  - <Item>
    <ItemHeader LineNumber="G55232" Quantity="1.0" Price="2350.00"
      VendorPart="G55232" />
    </Item>
  - <Item>
    <ItemHeader LineNumber="D23255" Quantity="2.0"
      Price="2252.00" VendorPart="D23255" />
    </Item>
  - <Summary>
    <Total Value=" 6854.00" />
    </Summary>
  </Invoice>

```

You are creating a channel named Smithfield main to receive invoices that have a total value of less than \$10,000. These invoices will be submitted to accounting for immediate payment using BizTalk Server 2000. If the invoices are in excess of \$10,000 they must be delivered to a separate channel, which will deliver the invoice documents to accounts payable for manual approval.

You must configure the Smithfield main channel to ensure this channel only processes invoices that are less than \$10,000. You want to configure the channel to receive and verify the invoices using the least amount of administrative effort. What should you do?

- Select the Filter inbound document checkbox. Click Filtering and add the XPath channel filtering expression `"/Invoice/Summary/Total[@Value>""10000"]"`
- Select the Filter inbound document checkbox. Click Filtering and add the XPath channel filtering expression `"/Invoice/Summary/Total[@Value!= ""10000"]"`
- Select the Filter inbound document checkbox. Click Filtering and add the XPath channel filtering expression `"/Invoice/Summary/Total[@Value<""10000"]"`
- Select the Filter inbound document checkbox. Click Filtering and add the XPath channel filtering expression `"/Invoice/Summary/Total = [@Value>""10000"]"`
- Select the Filter inbound document checkbox. Click Filtering and add the XPath channel filtering expression `"/Invoice/Summary/Total = [@Value!= ""10000"]"`
- Select the Filter inbound document checkbox. Click Filtering and add the XPath channel filtering expression `"/Invoice/Summary/Total = [@Value<""10000"]"`

**Answer: C**

#### Question 6.

You are the BizTalk developer for your company. The company will use BizTalk Server 2000 to receive purchase orders from its trading partners. BizTalk Server 2000 will process the purchase

orders and submit invoices to the appropriate trading partner. You have designed the business process portion of the XLANG schedule drawing as shown:

Begin ----> Receive PO --> Process Order --> Send Invoice --> End

You must design the implementation portion of the XLANG schedule drawing. The design will receive purchase order documents (POs) from multiple trading partners using an ASP page. The PO documents will be in a standard XML format. The ASP page will make a call by using the Submit method of the Interchange interface to submit the documents. A queue named .\private\$\RecPO will store the incoming PO documents. Once processed, an invoice will be returned to the appropriate trading partner. You must configure the port to receive the PO documents. Which port implementations can you utilize in your design, and how will the port be configured? (Choose all that apply.)

- A. Configure a static port.
- B. Configure a dynamic port.
- C. Use a Message Queuing port implementation.
- D. Use a BizTalk Messaging port implementation.
- E. Use a COM port implementation.
- F. Use a Script component port implementation.

**Answer: A, C & D**

#### Question 7.

You are a BizTalk Server developer for Healthcare AR Management (HAM). HAM provides centralized Medicare billing and asset management for its trading partners, which consists of a network of health care providers. The Business-to-Business (B2B) team, which includes a BizTalk administrator from HAM and each of the trading partners, has developed a set of business requirements that will be used to better integrate the business processes shared by the partners.

A new requirement is to use a uniform default organization identifier for each partner. Currently partners use the organization identifier Organization as the default identifier and an entry of their own choosing for the qualifier value. The B2B team has determined that the default organization identifier used by each partner will be changed to the Health Care Administration Medicare Provider number.

You are responsible for providing each of the company's trading partners with instructions detailing the steps involved in completing this process. You want to design your plan to require the least amount of administrative effort. How should this change be accomplished?

- A. Create a new organization identifier using the standard Health Care Administration Medicare Provider type. Set this identifier as the default organization identifier.
- B. Rename the organization identifier Organization to Health Care Administration Medicare Provider. Change the identifier value to the company's provider number.
- C. Change the qualifier for the organization identifier Organization to 29. Set this identifier as the default organization identifier.
- D. Create a custom organization identifier named Health Care Administration Medicare Provider for the home organization. Configure the qualifier value to the company's provider number. Set this identifier as the default organization identifier.

**Answer: A**

#### Question 8.

You are the BizTalk developer for your company. The company wants to use BizTalk Server 2000 to receive electronic purchase orders from its trading partners. These partners have agreed to transmit the documents using the same XML format and transport service. Additional partners

may be added to this process and will be required to use the same document format. BizTalk Server will receive the PO document by using a messaging queue and submit them to an internal application named Purchase\_control for further processing. You must design the messaging port and channel to ensure the smooth processing of the purchase order documents. You need to accomplish this task using the least amount of development effort. What should you do?

- A. Create a messaging port with Purchase\_control as its destination. Create a channel for each trading partner organization that will submit purchase orders as its source.
- B. Create a messaging port with each trading partner organization that will submit purchase orders as its destination. Create a channel with Purchase\_control as its source.
- C. Create a messaging port with each trading partner organization that will submit purchase orders as its destination. Create a distribution list that includes these messaging ports. Create a channel for this distribution list with Purchase\_control as its source.
- D. Create a new messaging port and specify it as an open messaging port. Create a channel for this messaging port with Purchase\_control as its source.
- E. Create a messaging port with Purchase\_control as its destination. Create a new channel and specify it as an open channel.

**Answer: E**

#### **Question 9.**

You are a BizTalk Server developer for your company. You are integrating your company's BizTalk Server 2000 system with a trading partner's BizTalk Server 2000 system. The trading partner has designed an ASP page to receive purchase order (PO) documents from your company. The purchase order documents are formatted using custom XML. A messaging port has been configured for transporting the PO document to the trading partner's ASP page. A channel has been configured to process the PO document interchange.

You want to configure BizTalk Server 2000 to support delivery receipts from the trading partner to confirm all PO interchanges. You want to implement this design using the least amount of administrative effort. What should you do? (Choose Two)

- A. Use BizTalk Server Administrator to configure the Reliable message reply-to URL value with the URL used by the server group to receive reliable messaging delivery receipts.
- B. Use BizTalk Messaging manager to create a messaging port for transporting the receipt to the source system.
- C. Use BizTalk Mapper to create a map for the receipt channel.
- D. Use BizTalk Messaging manager to create an envelope that uses the reliable envelope format.
- E. Use BizTalk Messaging manager to edit the receipt properties for the channel.

**Answer: A & D**

#### **Question 10.**

You are a BizTalk Server developer for your company. You are integrating your company's BizTalk Server 2000 system with a trading partner's BizTalk Server 2000 system. The trading partner sends purchase order documents that are formatted using XML. The partner requests that a reliable delivery messaging receipt be returned for all successfully transmitted and received PO interchanges. The partner provides you with an SMTP address for the delivery of these messages.

A messaging port and channel have been created to process the PO documents. You want to configure BizTalk Server 2000 to provide receipts to the trading partner to confirm all PO interchanges. You want to implement this design using the least amount of administrative effort. What should you do?

- A. Use BizTalk Messaging manager to configure the SMTP From address organization identifier for the home organization.
- B. Use BizTalk Server Administrator to configure the Reliable messaging reply-to URL value with the URL used by the server group to receive reliable messaging delivery receipts. Use BizTalk Server Administrator to specify the SMTP host to receive the message.
- C. Use BizTalk Messaging manager to create a messaging port and channel for sending the receipt to the source system. Use BizTalk Messaging manager to configure the SMTP From address in the header of the receipt.
- D. Use BizTalk Messaging manager to create a messaging port and channel for sending the receipt to the source system. Use BizTalk Messaging manager to configure the SMTP From address in the header of the receipt. Use BizTalk Editor to configure the document definition to create the reliable delivery message.

**Answer: A**

#### Question 11.

You are the BizTalk Server developer for your company, AmerHome Mortgage. I-Loan is a trading partner that uses Electronic Data Interchange (EDI) to distribute mortgage application requests that are received from consumers. These documents are forwarded by I-Loan using an ASCII format to its network of loan underwriters. You want to implement BizTalk Server 2000 to integrate your business process with I-Loan's business-to-business (B2B) network. Consumers surf to the I-Loan.com web site and fill out a loan application. Data from the application is captured and delivered to your company as an E-mail attachment. A sample application document is shown below:

```
Ascii Email from I-loan.com

friend referred,purchase,primary_residence,1,1988,105
Mockingbird,Montgomery,Al,35000,188000,100000,15,fixed,conventional,7,John,Smith,xxx-xx-
xxxx,(555) 222-1212,(555) 333-8282,none@none.com,555 Elm
Street,Montgomery,Al,35000,own,11,2,2,no,715,100000,4000,0,250,0,75,0,0,Betty,Smith,yyy-yy-
yyyy,(555) 222-1212,(555) 444-6161,none@none.com,same,,,,,3,3,no,350,2000,150,0,0,75,0,0,Thank
you for your consideration. Please call us with result at your earliest convenience. The Smiths
```

The information is currently processed by an internal application and manually distributed to the underwriter department. You want to develop the BizTalk Server 2000 implementation to automate this process. Which BizTalk Messaging Manager objects should you create to receive these documents? (Choose Two).

- A. a document definition
- B. a messaging port
- C. an envelope
- D. a channel

**Answer: C & D**

#### Question 12.

You are the BizTalk developer for your company. The company will use BizTalk Server 2000 to receive purchase orders from its trading partners. BizTalk Server 2000 will process the purchase orders and submit invoices to the appropriate trading partner. You have designed the business process portion of the XLANG schedule drawing as shown:

Begin ----> Receive PO --> Process Order --> Send Invoice --> End

You must design the implementation portion of the XLANG schedule drawing. The design will receive purchase order documents (POs) from multiple trading partners using an ASP page. The ASP page will make a call by using the SubmitSync method of the Interchange interface to submit the documents. The application used to process the incoming PO will be determined by which trading partner submits the document. Once processed, an invoice will be returned to the appropriate trading partner. You must configure the port to receive the PO documents. Which port



implementations can you utilize in your design, and how will the port be configured? (Choose all that apply.)

- A. Configure a static port.
- B. Configure a dynamic port.
- C. Use a Message Queuing port implementation.
- D. Use a BizTalk Messaging port implementation.
- E. Use a COM port implementation.
- F. Use a Script component port implementation.

**Answer: B, E & F**

**Question 13.**

Your company receives confidential data from its trading partners using BizTalk Server 2000. You must ensure that documents received originate from your trading partners. You also want to ensure that the data received includes a guarantee of authenticity. How should you configure your BizTalk server?

- A. On the Inbound Document page of the Channel Properties wizard, select Verify signature on inbound document.  
Type the name of the trading partner's certificate.
- B. On the Inbound Document page of the Channel Properties wizard, select Verify signature on inbound document.  
Type the name of your company's certificate.
- C. On the Security Information page of the Port Properties wizard, select E/MIME in the Encryption box.  
Type the name of the trading partner's certificate.
- D. On the Security Information page of the Port Properties wizard, select E/MIME in the encryption box.  
Type the name of your company's certificate.

**Answer: A**

**Question 14.**

You are the BizTalk developer for your company. BizTalk Server 2000 is being deployed to integrate business processes with the company's trading partners. You are configuring a new channel to one of the trading partners, Host, Inc. The partner will be submitting purchase order documents using the X12 850 format. These purchase orders will be processed using BizTalk Server 2000 and sent to accounts payable, purchasing, and inventory applications for order fulfillment.

You must configure the new channel to support the integration with Host, Inc. What should you do?

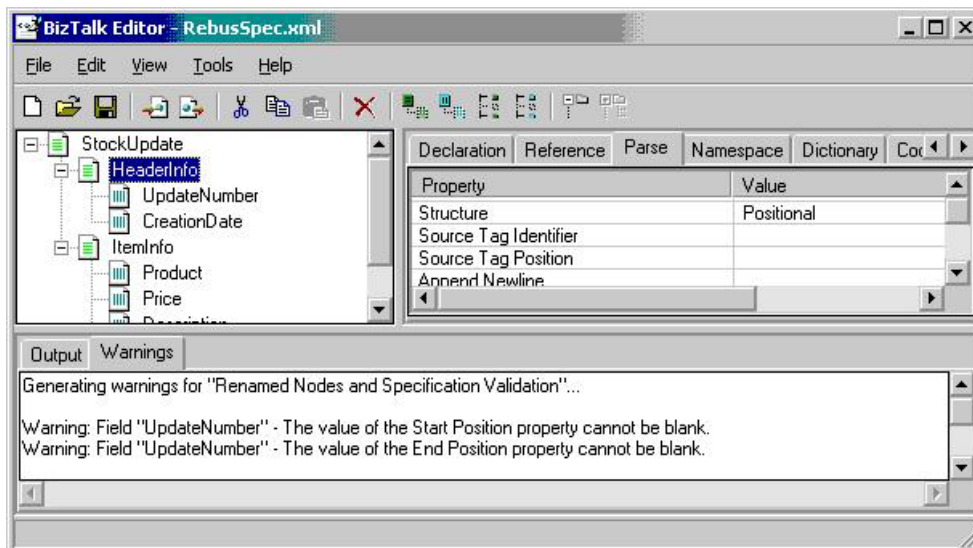
- A. Use BizTalk Messaging Manager to create a new channel to the Host\_Inc organization. Create a new standard organization identifier using the DUNS identifier. Use the default qualifier 01. Use the company's DUNS number for the qualifier value.
- B. Use BizTalk Messaging Manager to create a new channel to the Host\_Inc organization. Use the default organization identifier Organization/Host\_Inc. Use OrganizationName as the qualifier. Use Host\_Inc for the qualifier value.
- C. Use BizTalk Messaging Manager to create a new channel to the Host\_Inc organization. Create a new custom organization identifier using the name Host\_Inc. Use Phone\_Number as the qualifier. Use the company phone number for the qualifier value.
- D. Use BizTalk Messaging Manager to create an open channel to the Host\_Inc organization. Create a new standard organization identifier using the DUNS identifier. Use the default qualifier 01. Use the company's DUNS number for the qualifier value.

- E. Use BizTalk Messaging Manager to create an open channel to the Host\_Inc organization. Use the default organization identifier Organization/Host\_Inc. Use OrganizationName as the qualifier. Use Host\_Inc for the qualifier value.
- F. Use BizTalk Messaging Manager to create an open channel to the Host\_Inc organization. Create a new custom organization identifier using the name Host\_Inc. Use Phone\_Number as the qualifier. Use the company phone number for the qualifier value.

**Answer: A**

#### Question 15.

You are the BizTalk administrator for AllStuff Online. The company receives online inventory updates from all of its suppliers. Currently these reports are re-entered by hand into the inventory database. You want to utilize your new BizTalk Server 2000 deployment to automate this process. One of the company's major suppliers, Rebus Wholesaler, uses an application that sends their inventory documents as flat files. These documents contain both positional and delimited records. You test the validity of the specification you are creating. The results of these actions are shown below:



You must ensure the incoming data will be translated into a format acceptable to AllStuff Online's inventory database. What should you do?

- A. Set the positional parsing properties Start Position and End Position values by right-clicking on each positional record and selecting Calculate Field Positions.
- B. Set the positional parsing properties Start Position and End Position values by right-clicking on the root node StockUpdate and selecting Calculate Field Positions.
- C. Manually set the positional parsing property Source Tag Identifier for each positional record.
- D. Manually set the Structure property of each record for the specification to Delimited.

**Answer: A**

#### Question 16.

You are the BizTalk Server administrator for your company. The company distributes automotive parts to a number of automobile manufacturers. The company uses BizTalk Server 2000 to integrate business-to-business (B2B) processes with these trading partners. The manufacturers currently submit purchase order documents to the BizTalk Server computer, which processes the documents and submits them to an internal application. These orders are processed by the

application, and the output is delivered to the purchasing department for use in manually placing orders with the company's suppliers. Most orders are received from the trading partners between the hours of 10 A.M. and 5 P.M. The purchasing department typically takes 24 hours to process and submit these orders to the suppliers.

To further integrate the company's B2B processes, your parts suppliers have agreed to integrate their purchasing system with your BizTalk Server implementation. While this development promises to improve the company's order turn-around, you are concerned about the network traffic required over the company's fractional T-1 line.

Funds are not currently available to upgrade the fractional T-1 line. You need to configure the new B2B process to efficiently use the same link. What should you do?

- A. On the messaging port to the suppliers, configure the Service window From value to 18 and To value to 5.
- B. On the messaging port to the suppliers, configure the Service window To value to 18 and From value to 5.
- C. On the messaging port to the manufacturers, configure the Service window From value to 10 and To value to 17.
- D. On the messaging port to the manufacturers, configure the Service window To value to 10 and From value to 17.

**Answer: A**

#### **Question 17.**

You are the BizTalk developer for your company. You are implementing BizTalk Server 2000 to enable your company to submit purchase order (PO) documents to your trading partners. The PO documents are based upon the XML format and include destination and transport information. Your company frequently adds and removes trading partners from its list of authorized vendors. You want to configure your BizTalk Server to submit documents to all current trading partners using the least amount of administrative effort. What should you do?

- A. Use BizTalk Messaging Manager to create a messaging port to each of the partner organizations.
- B. Use BizTalk Messaging Manager to create a messaging port to the partner organizations. From the Destination Organization screen select Open destination.
- C. Use BizTalk Messaging Manager to create a messaging port to each of the partner organizations. Use BizTalk Messaging Manager to create a distribution list. Select the desired ports from the Available messaging ports list and click Add.
- D. Use BizTalk Messaging Manager to create a messaging port to the partners' applications. From the Destination Organization screen select Open destination.
- E. Use BizTalk Messaging Manager to create a messaging port to the partners' organizations. From the Destination Organization screen select Open destination. Configure the primary and backup transport properties to be used for the submissions.
- F. Use BizTalk Messaging Manager to create a messaging port to the partner applications. Configure the primary and backup transport properties to be used for the submissions. From the Destination Organization screen select Open destination.

**Answer: B**

#### **Question 18.**

You are the BizTalk administrator for AllStuff Online. The company receives online inventory updates from all of its suppliers. Currently these reports are re-entered by hand into the inventory database. You want to utilize your new BizTalk Server 2000 deployment to automate this process. One of the company's major suppliers, Rebus Wholesaler, uses an application that sends their inventory documents as flat files. These documents contain both positional and delimited records. You must create a document specification to transform the incoming data into a format acceptable to AllStuff Online's inventory database. What should you do?



- A. Use BizTalk Editor to create a document specification. Set the Structure property of the root node to Delimited. Set each record property to Delimited or Positional based upon their attributes.
- B. Use BizTalk Editor to create a document specification. Set the Structure property of the root node to Positional. Set each record property to Delimited or Positional based upon their attributes.
- C. Use BizTalk Editor to create a document specification. Set the Structure property of each record to Delimited or Positional based upon their attributes.
- D. Use BizTalk Editor to create a document specification. Set the Structure property of each record for the specification to Delimited.

**Answer: A**

**Question 19.**

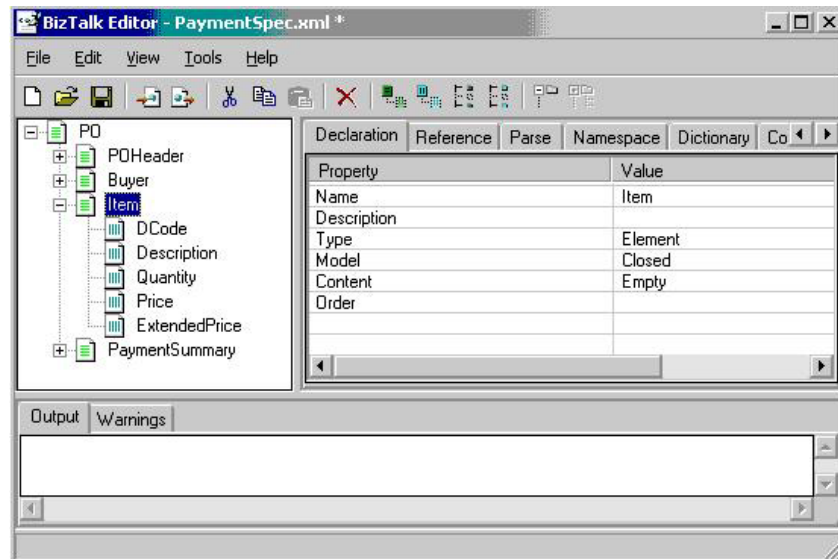
You are the BizTalk administrator for AllStuff Online. The company receives online inventory updates from all of its suppliers. Currently these reports are reentered by hand into the inventory database. You want to utilize your new BizTalk Server 2000 deployment to automate this process. One of the company's major suppliers, Tomes Imports, uses an application that sends their inventory documents using a delimited flat-file format. You must create a document specification to transform the incoming data into a format acceptable to AllStuff Online's inventory database. What should you do?

- A. Use BizTalk Editor to create a document specification. On the Reference tab, select the CUSTOM value for the Standard property. Enter the record and field delimiter values.
- B. Use BizTalk Editor to create a document specification. On the Reference tab, type the value XML for the Standard property. Enter the record and field delimiter values.
- C. Use BizTalk Editor to create a document specification. On the Declaration tab, select the Flat-file Delimited value for the Description property. Enter the record and field delimiter values.
- D. Use BizTalk Editor to create a document specification. On the Declaration tab, type the value XML for the Description property. Enter the record and field delimiter values.

**Answer: A**

**Question 20.**

You are the BizTalk developer for your company. The company receives payment authorizations from trading partners in standard XML format. Each purchase order contains one item record. The purchase orders are sent to either the sales department for fulfillment or the manufacturing department for further processing based upon the department code (Dcode) that is specified in the order. Microsoft Message Queuing Service is configured on the BizTalk Server computer. You want to automate the process of routing each XML purchase order document to the appropriate message queue for further processing. You create the schema shown below:



The Dcode field will be configured to receive one of two values. The two values are RegSales and BackOrder. You create two messaging queues: Sales and Manu. You create an XLANG schedule to process the inbound purchase order documents and use the XML Communication wizard to expose the Dcode field of the inbound purchase order message. You add an Action shape to implement a COM component that takes the value of the Dcode field and returns the fully qualified path of the message queue.

You need to complete the XLANG schedule to automate the routing of the purchase order documents. What should you do?

- Add an Action shape to implement static Message Queuing to send the purchase order document to the message queue.  
Drag a line from the return field that contains the queue path to the message queue port.
- Add an Action shape to implement dynamic Message Queuing to send the purchase order document to the message queue.  
Drag a line from the return field that contains the queue path to the message queue port.
- Add an Action shape to implement static Message Queuing to send the purchase order document to the message queue.  
Select Create a new queue for every instance in the Message Queue Binding wizard.
- Add an Action shape to implement dynamic Message Queuing to send the purchase order document to the message queue.  
Select Create a new queue for every instance in the Message Queue Binding wizard.

**Answer: B**

#### Question 21.

You are the BizTalk developer for your company. You are implementing BizTalk Server 2000 to integrate business-to-business (B2B) communications with the company's trading partners. The company receives electronic invoices from its trading partners. The partners agree to submit the documents to your company using an XML format.

Your manager now requires that you track all interchanges over \$500 that are submitted to BizTalk Server. You need to configure your BizTalk Server system to accommodate this requirement. What should you do?

- Configure the associated channel to log inbound documents and select the In native format checkbox.
- Create an AIC to log the inbound documents.

- C. Configure the associated channel to log inbound documents and select the In XML format checkbox.
- D. Configure the associated document definition to track the desired fields for the inbound documents.

**Answer: D**

**Question 22.**

You are the BizTalk administrator for your company. The company is using BizTalk Server 2000 to integrate its business-to-business (B2B) communications with its trading partners. The company's developer has configured BizTalk Server to submit purchase order (PO) documents to one trading partner's BizTalk Server system using the HTTPS transport type. The developer has tested the system, ensuring it is live and without error. You attempt to submit a sample PO document to the trading partner. The document transmission is unsuccessful and produces the error message shown below:

```
An error occurred in BizTalk Server.

Details:
-----
An error occurred during transmission: The specified client certificate cannot be loaded.
Request information:

Proxy:
Proxy port:80
URL:https://server/biztalk/receiveorder.asp
Content-Type:text/xml; charset='utf-8'
User name:
Client certificate:User_A@acme.com, US, SC, Aiken, "Acme, Interoperability Testing",
"Acme, Interoperability Testing",

User A
Request body:3146 Bytes
Timeout duration (seconds): 60
Error code:8009030d

The server encountered a transport error while processing the messaging port "User A
Certificate Test", which uses a transport component with a ProgID of "BizTalk.SendHTTPX.1".

Suspended Queue ID: "{B365E040-E11B-47BE-A4AF-7354E6882F91}"
```

You need to resolve the problem that produced the error. You want to ensure that the document data is successfully submitted to and processed by the partner. You want your solution to use the least amount of administrative effort. What should you do?

- A. Restart BizTalk Messaging Manager using the service account used to create the client certificate. Have the partner open the Suspended queue, right-click the document and select Resubmit.
- B. Have the partner uninstall the client certificate. Create a new encryption certificate and deliver it to the partner to install. Have the partner open the Suspended queue, right-click the document and select Resubmit.
- C. Have the partner uninstall the client certificate. Create a new encryption certificate and deliver it to the partner. Instruct the partner to install the new certificate. Have the partner open the Suspended queue, right-click the document and select Delete. Recreate the sample PO and resubmit the document.
- D. Restart BizTalk Messaging Manager using the service account used to create the client certificate. Have the partner open the Suspended queue, right-click the document and select Delete. Recreate the sample PO and resubmit the document.

**Answer: D**

**Question 23.**

You are the BizTalk administrator for your company. You are implementing BizTalk Server 2000 to integrate business-to-business (B2B) communications with the company's trading partners. The company wants to receive shipping notification documents from one trading partner. The

partner's EDI system will submit the documents to your company in ASCII format. You will configure the interchange to use BizTalk Messaging Services to transform each document received into your internal message format.

You want the new integration to log the original shipping documents you receive. You need to configure your BizTalk Server system to accommodate this requirement. What should you do?

- A. Configure the associated channel to log inbound documents and select the In native format checkbox.
- B. Create an AIC to log the inbound documents.
- C. Configure the associated channel to log inbound documents and select the In XML format checkbox.
- D. Configure the new document definition to track the desired fields for the inbound documents. Configure the Track inbound document options for the channel.

**Answer: A**

**Question 24.**

You are the BizTalk developer for your company. You are using BizTalk Editor to import a well-formed XML document instance that will be used to create a specification. This specification will be used to map incoming invoices to a format used by your company's accounts payable application.

The imported document instance contains elements typed as XML-Data Reduced data types. What must you do to ensure the document instance will validate against its corresponding specification? (Choose all that apply.)

- A. Ensure that all elements typed as XDR data types have their Model properties set to Open.
- B. Ensure that you remove the byte order marker at the beginning of the file.
- C. Ensure that data contained within the start range and end range are not present in the Invalid Character Ranges dialog.
- D. Ensure the document instance does not contain multiple documents.

**Answer: A & D**

**Question 25.**

You are the BizTalk administrator for your company. Your company has implemented BizTalk Server 2000 to integrate an accounting application with a client/server application. The accounting application generates data in XML and delivers the data to BizTalk Server by using a messaging queue. The data is processed and transported to the client/server application using a custom application integration component (AIC). A Message Queuing receive function is created with the polling location defined as Direct OS: BizTalkServer\Acctqueue. You have configured BizTalk Messaging Manager to use Message Queuing for the primary transport and specified the correct queue location. However, when you submit test data to the system the error message shown below is generated in the Application log.

Event Type: Error  
Event Source: BizTalk Server  
Event Category: Document Processing  
Event ID: 324  
Date: 5/24/2001  
Time: 6:04:04 PM  
User: N/A  
Computer: BizTalkServer  
Description:  
An error occurred in BizTalk Server.

Details:

-----  
The specified module could not be found.

The server encountered a transport error while processing the messaging port "MSMQ Test", which uses a transport component with a ProgID of "BizTalk.SendMSMQ.1".

All retry transmissions failed.

The specified module could not be found.

The server could not finish processing messaging port "MSMQ Test".

Suspended Queue ID: "{65325BE-d5h1-45fg-s5r4-5662562516F37}"

The specified module could not be found.

You must identify and correct the cause of the error. What should you do?

- A. Install the Microsoft Messaging Queue service on the BizTalkServer computer.
- B. Edit the associated messaging port and change the primary transport to Application Integration Component.
- C. Unregister and reregister the AIC DLL using regsvr32.exe.
- D. Edit the associated messaging port and clear the Service window checkbox.
- E. Create a custom preprocessor. Specify the preprocessor in the Message Queuing receive function.

**Answer: A**

**Question 26.**

You are the BizTalk administrator for your company. The company is using BizTalk Server 2000 to integrate its business-to-business (B2B) communications with its trading partners. The trading partners utilize BizTalk Server 2000 to submit documents to your BizTalk Server computer and to receive delivery receipts. Encryption certificates are required on all partner systems, and have been imported and installed. A partner attempts to send data in the form of a sample purchase order document to your BizTalk server system. The document transmission is unsuccessful and produces the error message shown below:

An error occurred in BizTalk Server.

Details:

-----  
An error occurred during transmission: The specified client certificate cannot be loaded.  
Request information:

Proxy:  
Proxy port:80  
URL:https://server/biztalk/receiveorder.asp  
Content-Type:text/xml; charset="utf-8"  
User name:  
Client certificate:User\_A@acme.com, US, SC, Aiken, "Acme, Interoperability Testing",  
"Acme, Interoperability Testing",

User A  
Request body:3146 Bytes  
Timeout duration (seconds): 60  
Error code:8009030d

The server encountered a transport error while processing the messaging port "User A  
Certificate Test", which uses a transport component with a ProgID of "BizTalk.SendHTTPX.1".

Suspended Queue ID: "{B365E040-E11B-47BE-A4AF-7354E6882F91}"

The partner resolves the problem that created the error. You want to ensure that the user's document data is successfully submitted to your BizTalk Server computer. What should you do?

- A. Open the Suspended queue. Right-click the document and select Resubmit.
- B. Open the Suspended queue. Right-click the document and select Delete. Recover the document from the Recycle Bin and manually resubmit.
- C. Open the Suspended queue. Right-click the document and select Delete. Have the partner recreate and submit the document.
- D. Open the Retry queue. Right-click the document and select Resubmit.

**Answer: C**

**Question 27.**

You are the BizTalk developer for your company. The company uses BizTalk Server 2000 to receive purchase orders from a trading partner. BizTalk Server 2000 will process the purchase orders and submit invoices to the trading partner. The purchase order documents will be submitted in batches using a custom format. You create a custom envelope to facilitate the receipt of these documents. You want to ensure that the documents are properly received and processed by BizTalk Server 2000. What should you do?

- A. Create and register a custom parser component.
- B. Create custom parser component.
- C. Create and register a custom serializer component.
- D. Create custom serializer component.
- E. Select the envelope in the messaging port used by the server.

**Answer: A**

**Question 28.**

You are the BizTalk developer for your company. The company wants to deploy BizTalk Server 2000 to integrate business-to-business (B2B) transactions with its trading partners. You are configuring BizTalk Server 2000 to receive invoice documents from one trading partner. The partner will transmit invoice documents using an XML format to a message queue on the BizTalk Server computer. The BizTalk server will process the documents and submit them to a legacy accounts payable application. The accounts payable application requires data to be submitted using a positional flat-file format and can only be communicated with using a non-standard proprietary protocol.

You must configure BizTalk Server 2000 to submit the invoices to the accounts payable application. What should you do? (Choose all that apply.)

- A. Create and register an application integration (AIC) component.
- B. Create a messaging port to the application.
- C. Choose Application Integration Component as the primary transport.
- D. Configure an envelope using the flat-file format.
- E. Choose Loopback as the primary transport.
- F. Choose File as the primary transport and configure the target UNC path.
- G. Configure delimiters for the interchange.

**Answer: A, B, C & D**

**Question 29.**

You are a BizTalk Server developer for Red-Plus Pharmaceuticals company. You have deployed BizTalk Server 2000 to receive purchase order (PO) documents from a variety of trading partners. You want to configure BizTalk Server 2000 to provide acknowledgements to these trading partners to confirm product orders. You must design your BizTalk Server implementation to support the sending of acknowledgement documents to a trading partner using the SMTP transport type. What should you do? (Choose two).

- A. From BizTalk Messaging Manager, create a new messaging port. Select SMTP for the primary transport type. Configure the Address parameter with the trading partner's e-mail address.
- B. From BizTalk Messaging Manager, create a new messaging port. Select SMTP for the primary transport type. Configure the Address parameter with the BizTalk Server e-mail address.
- C. From BizTalk Messaging Manager, create a new messaging port. Select Application Integration Component for the primary transport type. Associate the COM component that will initiate the acknowledgement documents.
- D. From BizTalk Messaging Manager, create a new messaging port. Select the File transport type. Identify the hard drive file location used by the trading partner to store PO documents.
- E. From BizTalk Administration, configure the SMTP host in the general properties of BizTalk Server 2000.
- F. From BizTalk Administration, configure the SMTP host in the general properties of the BizTalk Server group.

**Answer: A & F**

**Question 30.**

You are the new BizTalk administrator for Great Outdoors Equipment, LLP. The company is established as a leader in distributing outdoor recreational products for many online retail Web sites. You want to install BizTalk Server 2000 to integrate the company's business-to-business (B2B) interactions with these trading partners. To facilitate the company's high sales volume, you are planning to deploy a BizTalk server group consisting of five BizTalk Server computers. You want to configure one of the computers, BTReduce, to receive all inbound documents. These documents will then be submitted to the remaining BizTalk servers in the server group for processing. All messages are received to a local message queue on BTReduce. How will you configure BTReduce server properties to support this role? (Choose two.)

- A. On the BTReduce Properties page, ensure the Participate in work-item processing check box is selected.
- B. On the BTReduce Properties page, ensure the Participate in work-item processing check box is cleared.
- C. On the BTReduce Properties page, ensure the Maximum number of worker threads per processor allowed option is set to zero.



- D. On the BTReceive Properties page, ensure the Maximum number of worker threads per processor allowed option is set to a higher value (75).
- E. On the BTReceive Properties page, ensure the Maximum number of receive function threads allowed option is set to a lower value (1).
- F. On the BTReceive Properties page, ensure the Maximum number of receive function threads allowed option is set to a higher value (75).

**Answer: B & F**

**Question 31.**

You are the network administrator for your company. The company recently decided to implement BizTalk Server 2000 to provide business-to-business (B2B) integration with its trading partners. A new administrator, Brian, has been hired to assist in the administration of the BizTalk Server group. During the integration, test documents are being submitted by the trading partners to the BizTalk Server for processing. You want Brian to track the progress of these documents as they are submitted. When he attempts to access <http://localhost/BizTalkTracking> the following error message is received:

"HTTP 401.3 - Access denied by ACL on resource Internet Information Services."

You are able to successfully access the Web page using your user account. You want to ensure that Brian has only the permissions necessary to track incoming documents. What should you do?

- A. Select Windows Authentication Only for the SQL Server Login Properties
- B. Add Brian's user account to the BizTalk Server Administrators group.
- C. Add Brian's user account to the BizTalk Server Report Users group.
- D. Add Brian's user account to the Windows 2000 Administrators group.

**Answer: C**

**Question 32.**

You are the BizTalk developer for your company, Wreck Parts, USA. Your company is a high-volume distributor of automotive body parts to body shops and vehicle dealerships in the northeastern United States. Your company wants BizTalk Server 2000 configured to transmit electronic purchase orders to a parts manufacturer in Detroit, Michigan. The trading partner receives electronic purchase orders to a Web site by using an ASP page. Your company's firewall has port 80 opened for communications from the internal network to the Internet. You must develop a BizTalk Server solution to transmit electronic purchase orders to this trading partner. What should you do?

- A. Use BizTalk Messaging Manager to create an organization for the trading partner. Configure a port that uses the HTTP transport type.
- B. Use BizTalk Messaging Manager to create an organization for the trading partner. Configure a port that uses the HTTPS transport type.
- C. Use BizTalk Messaging Manager to create an organization for the trading partner. Configure a port that uses the SMTP transport type.
- D. Use BizTalk Messaging Manager to create an organization for the trading partner. Configure a port that uses the Loopback transport type.

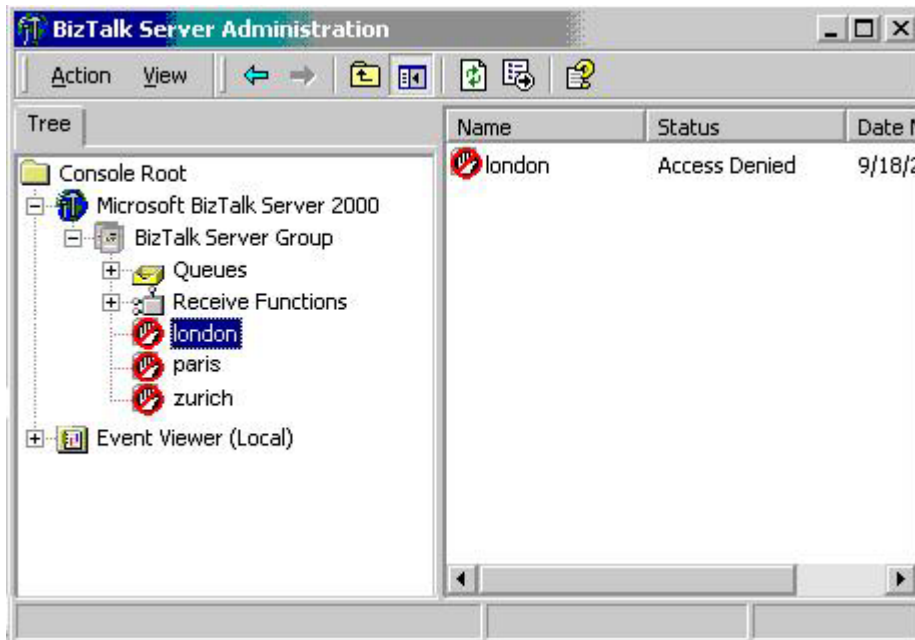
**Answer: A**

**Question 33.**

You are the new BizTalk administrator for your company. The company recently decided to implement BizTalk Server 2000 to provide business-to-business (B2B) integration with its trading



partners. You were hired to assist in the administration of the BizTalk Server group. During the integration you decide to configure one server, London, to receive all incoming documents for the server group. You want to optimize the Maximum number of receiving threads allowed value for this server. You attempt to open the BizTalk Server Administration tool to access the server's Properties page, but you are not allowed access to the server. The BizTalk Server Administration interface is shown below:



You must gain access to the Properties page for London to change this configuration. What should you do?

- A. Select Windows Authentication Only for the SQL Server Login Properties.
- B. Have an administrator add your user account to the BizTalk Server Administrators group.
- C. Have an administrator add your user account to the BizTalk Server Report Users group.
- D. Have an administrator add your user account to the Windows 2000 Administrators group.

**Answer: D**

#### Question 34.

You are the administrator of a Windows 2000 network. BizTalk Server 2000 is used to integrate business-to-business (B2B) transactions between your company and partner organizations. The BizTalk server is a member of your Active Directory domain.

A new software developer, Mark, opens the BizTalk Messaging Manager and attempts to search for a channel. He receives the error, "You are not authorized to access the Microsoft BizTalk 2000 Server." Mark will need the ability to create and edit channels and ports in BizTalk Server 2000. What should you do?

- A. Add Mark's user account to the BizTalk Administrators group.
- B. Add Mark's user account to the Enterprise Administrators group.
- C. Add an X.509 certificate from a trusted publisher to Mark's browser.
- D. Add a new SQL Server login named John on the SQL server that is running the Interchange BTM database.
- E. Configure the new login to use Windows Authentication.

**Answer: A**

**Question 35.**

You are the BizTalk architect for your company. You are using three Windows 2000 Server computers for the deployment. You want to design your BizTalk Server deployment to achieve optimal performance for document messaging. BizTalk Document Tracking will be enabled for the deployment. What should you do?

- A. Install BizTalk Server 2000 on one computer.  
Install the BizTalk Tracking database on the second computer.  
Install BizTalk Messaging Management and Shared Queue databases on the third computer.
- B. Install BizTalk Server 2000 on two computers, and install BizTalk Messaging Management and Shared Queue databases on both computers.  
Install the BizTalk Tracking database on the third computer.
- C. Install BizTalk Server 2000 on two computers.  
Install BizTalk Messaging Management and Shared Queue databases and the BizTalk Tracking database on the third computer.
- D. Install BizTalk Server 2000 on one computer, and install the BizTalk Tracking database on this computer.  
Install BizTalk Messaging Management and Shared Queue databases on the second and third computers.

**Answer: A**

**Question 36.**

You have a business requirement to store inbound documents for a particular channel in XML format. What action must you take to accomplish this? (Assume any dependent actions have already been performed.)

- A. In the Document Definition Properties dialog box, click the Global Tracking tab. Select the specification fields you want to add to the 'Fields to track' list.
- B. On the Document Logging page of the Channel wizard, select the 'In XML format' checkbox in the 'Log inbound document' area.
- C. In BizTalk Server Administration, click the server group you want to configure. On the Action menu, click Properties and select the Tracking tab. Select the 'Enable document tracking' and 'Log incoming interchange' checkboxes.

**Answer: B**

**Question 37.**

You are installing and configuring BizTalk Server 2000. You have four servers to dedicate to document messaging. Given these conditions, how should you configure these servers to optimize performance for document messaging?

- A. Install BizTalk Server on two computers. Create two server groups - one for receiving and one for document processing. Add an additional server to each group to house the Tracking, Messaging Management, and Shared Queue databases. Scale each computer vertically until optimum throughput is reached.
- B. Install BizTalk Server on all four computers. Designate one server to perform receive functions, and configure this server not to participate in work-item processing. Load-balance the database requirements by placing the Tracking database, the Messaging Management database, and the Shared Queue database on separate servers. Scale each computer horizontally until optimum throughput is reached.
- C. Install BizTalk Server on two computers. Configure receive functions on one BizTalk Server, and perform all BizTalk document processing on the other BizTalk Server. Configure the 'receive' BizTalk server not to participate in work-item processing. Install the Tracking

database on one of the remaining computers. On the last computer, install the Messaging Management and Shared Queue databases. This computer should have multiple hard drives for optimal configuration of the Shared Queue database - a separate drive for each of the four shared queues.

- D. Install BizTalk Server on two computers. Configure receive functions on one BizTalk Server, and perform all BizTalk document processing on the other BizTalk Server. Configure the 'receive' BizTalk server not to participate in work-item processing. Install the Tracking database on one of the remaining computers. This computer should have multiple hard drives for optimal configuration of the Tracking database. On the last computer, install the Messaging Management and Shared Queue databases.

**Answer: D**

## Part 4 Creating Auxiliary Components for BizTalk Server Solutions

### Question 1.

You are the BizTalk developer for your company. Your company uses BizTalk Server 2000 to integrate business-to-business (B2B) with its trading partners. Your BizTalk Server deployment makes extensive use of BizTalk Orchestration Services. You must configure a COM+ application to host an XLANG schedule created for a new trading partner. The new application is expected to dehydrate often. You want to ensure that the new XLANG schedule operates efficiently and doesn't degrade the overall performance of the BizTalk Server group. What should you do? (Choose all that apply.)

- A. Create a new Orchestration Persistence database.
- B. Use the existing Orchestration Persistence database.
- C. Extend the latency setting for the XLANG Scheduler Engine.
- D. Change the data source name (DSN) for the COM+ application.

**Answer: A & D**

### Question 2.

You are a BizTalk developer for J. Handley Company. You are using BizTalk Orchestration Designer to develop a business process that will receive shipping confirmation documents from a message queue and pass each document to a COM component. The COM component includes a ProcessSCO method that takes two parameters. One parameter is an XML string representing a shipping confirmation document, and the other parameter is an integer named XMLFormat that selects the format of the XML string. The shipping confirmation document handled by the process will always be in the same format, and the document does not contain format information. You need to create a solution that parses the format to the COM component. What should you do on the Data page? (Choose two.)

- A. Create a new constant.
- B. Create a new field in the shipping confirmation document.
- C. Connect it to the XMLFormat field on the ProcessSCO\_in message.
- D. Connect it to the XMLFormat field on the ProcessSCO\_out message.

**Answer: A & C**

### Question 3.

You are the BizTalk developer for your company. Your company, JustSox, retails athletic apparel to sporting enthusiasts from its Web site. JustSox maintains a small inventory of merchandise and prefers to make daily purchases from its trading partners. You are using BizTalk Mapper to create a map for translating a daily sales/adjusted inventory document from the internal application to a purchase order document. The purchase order will be automatically distributed to a particular trading partner.

Using Microsoft Visual C++, you create a custom functoid that will calculate an order quantity for each item in inventory. The resulting output will be added to the purchase order for this vendor. You want to implement this functoid in your map. What should you do? (Choose all that apply.)

- A. Implement the CannedFunctoid class.
- B. Implement the IFunctoid interface.
- C. Override the methods and properties of the CannedFunctoid class.
- D. Implement the IDictionary interface.
- E. Register the functoid.

**Answer: A, B & E**

**Question 4.**

You are the BizTalk developer for your company. You are developing the company's BizTalk Server group to receive purchase order documents from one of its trading partners. The trading partner will place the documents on an FTP site for submission to your BizTalk Server implementation. You plan to develop a File receive function to monitor the site and submit the documents to the BizTalk Server channel. You will configure the channel to map the incoming purchase order to PO.xml, the schema currently used by your company.

You want to develop a component to pass the document data to a Microsoft SQL Server database. You should accomplish this task using the least amount of development effort. What should you do?

- A. Create a custom parser to translate the data.
- B. Create a custom serializer to translate the data.
- C. Create a custom functoid to map the data.
- D. Create a scripting functoid to map the data.
- E. Create an application integration component (AIC) to store the data.

**Answer: E**

**Question 5.**

You are the BizTalk developer for your company. The company will use BizTalk Server 2000 to receive expense report submissions from company branch locations worldwide. You are using BizTalk Orchestration Designer to modify the XLANG schedule drawing used to automate this process.

The XLANG schedule uses COM components and long-running transactions to submit, verify, and request payment for the reports. Typically this business process can take ten days to complete.

When you test the new XLANG schedule a new instance of the COM component is created each time the schedule is rehydrated. You need to ensure the XLANG schedule will hold state and run durably over an extended period of days. What should you do?

- A. Use a COM component that can be saved using the IPersistStream interface.
- B. Use a COM component that can be saved using the ISchemaImporterErrorProvider interface.
- C. Use a COM component that can be saved using the IBTSAppIntegration interface.
- D. Use a COM component that can be saved using the IBizTalkSerializerComponent interface.

**Answer: A**

**Question 6.**

You are the BizTalk developer for your company. Your company has implemented BizTalk Server 2000 to integrate an accounting application with a legacy finance application. The accounting application generates data in custom XML format and delivers the data to BizTalk Server by using a messaging queue. The data is processed and transported to the finance application using a custom application integration component (AIC). You create the AIC by using Visual Basic and deploy it in the correct messaging port.

The integration has been implemented and has operated without error for three months. You make changes to the document specification at the request of the accounting department. After

the changes are made, you create a new version of the AIC. The new AIC is deployed to replace the existing component. When you test the upgraded system you receive the following error message in the Application log:

This server could not create a component with the class ID "" for transport. Verify this component is properly registered.

You must identify and correct the cause of the error. What should you do? (Choose three)

- A. Delete and recreate the COM+ application.
- B. Edit the COM+ application and point it to the new AIC DLL.
- C. Reselect the AIC DLL that has the same prog ID as the primary transport in the messaging port definition.
- D. Unregister and reregister the AIC DLL using regsvr32.exe.
- E. Delete all entries for the AIC DLL from the system registry and reregister.
- F. Reselect the AIC DLL in the messaging port definition.

**Answer: B, C & D**

**Question 7.**

You are the BizTalk developer for your company. You have created a COM+ component that will be located on a two-node BizTalk Server 2000 cluster. You must provide the ability for the HTTP transport service on the sending application to make a single Submit call to the cluster when accessing the COM+ application, even in the event of server failover. What should you do?

- A. Install Microsoft Application Center 2000 on a freestanding server computer. Place this computer on the same subnet as the BizTalk Server cluster. Configure Component Load Balancing (CLB) for the cluster. Propagate the COM+ component to each member of the cluster.
- B. Install Microsoft Application Center 2000 on the same server as Microsoft BizTalk Server 2000. Configure CLB for the cluster. Propagate the COM+ component to each member of the cluster.
- C. Install Microsoft Application Center 2000 on a freestanding server computer. Place this computer on the same subnet as the BizTalk Server cluster. Configure CLB for the cluster.
- D. Install Microsoft Application Center 2000 on the same server as Microsoft BizTalk Server 2000. Configure CLB for the cluster.

**Answer: B**

## Part 5 Administering BizTalk Server Solutions

### Question 1.

You are the BizTalk administrator for your company. You have installed BizTalk Server 2000 on a single computer. The BizTalk database files are located on a database computer running Microsoft SQL Server. You have configured BizTalk Server 2000 to integrate the company's business-to-business (B2B) processes with those of the company's trading partners. These partners submit detailed purchase order documents to your company's BizTalk Server. The sales department requires that periodic reports be created that track sales trends by product and by trading partner. To facilitate this requirement you have enabled tracking at the document and field level.

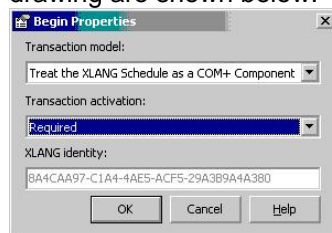
The B2B integration is live and performing without error. However, you notice continuous write operations on the database hard disks. When monitoring the SQL Server computer using System Monitor, you note that the CPU is operating at 50% capacity. You want to automatically remove selected transactions from the database based upon criteria that you specify. You want to ensure that optimum SQL Server performance is produced while maintaining document and field-level tracking. You also want your solution to require minimum administrative effort. What should you do?

- A. Enable the Auto shrink feature for the database files.
- B. Enable the Truncate log on checkpoint feature for the database files.
- C. Maintain the Automatically grow file feature for the database files. Select Restrict file size and configure a file size limit.
- D. Configure a SQL Server Agent to periodically remove transactions from the database files.

**Answer: D**

### Question 2.

You are a BizTalk developer for AllStuff Online. The company uses an XLANG schedule named bidProcess to accept and post bids for online auction items. bidProcess is initiated by auction participants each time a bid is submitted. The XLANG schedule must run within the scope of a new transaction each time a bid is placed. Current transaction properties for the XLANG schedule drawing are shown below:



You want to configure the transaction activation properties so that when a client object creates a bidProcess the client object will be required to be part of a new transaction context.

What should you do?

- A. Keep the current transaction activation set to Required.
- B. Change the transaction activation to Not Supported.
- C. Change the transaction activation to Supported.
- D. Change the transaction activation to Require New.

**Answer: D**

### Question 3.

You are the BizTalk developer for your company, SmithCo Stock Brokerage (SSB). You are designing an XLANG schedule that will represent a financial transaction between the cash management and portfolio accounts of SSB members. When a stock purchase is made, the amount of the trade must be removed from the member's cash management account and added to the trading account. You want to enclose the credit and debit operations in a Transaction shape in your XLANG schedule drawing. Before designing the XLANG schedule you must configure the properties of the Begin shape. What should you do?

- A. Choose the Treat the XLANG schedule as a COM+ Component option for the transaction model. In the Transaction activation list, select Not Supported.
- B. Choose the Treat the XLANG schedule as a COM+ Component option for the transaction model. In the Transaction activation list, select Supported.
- C. Choose the Treat the XLANG schedule as a COM+ Component option for the transaction model. In the Transaction activation list, select Required.
- D. Choose the Treat the XLANG schedule as a COM+ Component option for the transaction model. In the Transaction activation list, select Requires New.
- E. Set the transaction model to Include transaction within the schedule.

**Answer: E**

**Question 4.**

You are the new BizTalk architect for Great Outdoors Equipment, LLP. The company is established as a leader in distributing outdoor recreational products for many online retail Web sites. You want to install BizTalk Server 2000 to integrate the company's business-to-business (B2B) interactions with these trading partners. You are designing the BizTalk Server 2000 implementation to receive orders from the company's Web site. These orders will be processed by the BizTalk Server group, which will submit purchase order documents to the appropriate partner using the partner system's native document format. A majority of documents received from the partners will be formatted using an X12 850 format, but many partner systems require the purchase order documents to be formatted using a delimited flat-file format. Two trading partners are upgrading their current integration systems to BizTalk Server 2000 in the near future. You want to optimize the receive processing for the BizTalk Server group. How should you configure the server call sequence for the group?

- A. BizTalk.ParserX12.1  
BizTalk.ParserFFFile.1  
BizTalk.ParserXML.1  
BizTalk.ParserEdifact.1
- B. BizTalk.ParserFFFile.1  
BizTalk.ParserXML.1  
BizTalk.ParserEdifact.1  
BizTalk.ParserX12.1
- C. BizTalk.ParserXML.1  
BizTalk.ParserEdifact.1  
BizTalk.ParserX12.1  
BizTalk.ParserFFFile.1
- D. BizTalk.ParserEdifact.1  
BizTalk.ParserX12.1  
BizTalk.ParserFFFile.1  
BizTalk.ParserXML.1

**Answer: A**

**Question 5.**



You are the BizTalk administrator for Strucker Products, an online janitorial supplies distributor. The company has experienced rapid growth since its inception five years ago. The company has BizTalk Server 2000 installed on a single computer. Microsoft SQL server 2000 is installed on a separate computer and is configured to host the BizTalk Server databases. The SQL Server computer also hosts the customer database files for the company's Web site. You have configured BizTalk Server 2000 to integrate the company's business-to-business (B2B) interactions with one of its suppliers. The trading partner electronically transmits shipping notices to your company's BizTalk server. The shipping notices are detailed in nature, including information pertaining to item quantity and availability.

The trading partner requires receipts to ensure the shipping notices are received and processed by your BizTalk server. You have enabled tracking at the field level. You have noticed that the Tracking database is growing rapidly and the SQL Server computer's performance is degrading. You are concerned that the hard disk and processor resources are not being used in the optimum manner.

You must ensure that the hard disk and processor resources are optimized while maintaining the current tracking scheme. You want to accomplish this using the least amount of administrative effort. What should you do?

- A. Enable the Auto shrink feature for the database files.
- B. Enable the Auto shrink and Truncate log on checkpoint features for the database files.
- C. Enable the Truncate log on checkpoint feature for the database files.
- D. Enable the Automatically grow file feature for the database files.
- E. Enable the Automatically grow file feature for the database files. Select Restrict file size and configure a file size limit.
- F. Configure replication to a SQL Server Agent. Configure the service to periodically remove transactions from the database files.

**Answer: A**

#### **Question 6.**

You notice that the performance of your BizTalk Server installation has deteriorated dramatically. Upon further investigation, you discover that the Tracking database has grown too large. You need to bring the database back down to a manageable size. What action should you take?

- A. Use SQL Server Enterprise Manager to create a new job to remove transactions based on criteria you specify.
- B. Use SQL Server Enterprise Manager to add a new trigger that will automatically purge transactions based on criteria you specify.
- C. Manually remove outdated transactions from the database.
- D. Use Visual Studio to modify existing stored procedures to cause old transactions to be purged more quickly based on criteria you specify.

**Answer: A**

#### **Question 7.**

You have installed and configured BizTalk Server in a lab environment, and you are now conducting tests to determine whether or not the existing architecture can sufficiently handle current and anticipated future system demands.

Using the System Monitor tool, you monitor a variety of counters under several loading conditions. Among your findings:

Physical Disk: % Disk Time - This counter reaches 60-70 percent under peak loading conditions.  
Memory: Page Faults/sec - This counter is typically below 2, but reaches 5 during peak loading conditions.

Message Queue: Messages in Queue - This counter can reach 1000 during normal operation, and as high as 2000 under peak loading conditions.  
System: Context switches/sec - This counter is running much higher on the BizTalk server than on the other servers.

What corrective action might these findings indicate?

- A. The Message Queue server needs an immediate memory upgrade.
- B. You should increase the amount of RAM to allow the server to respond to requests more quickly.
- C. You should consider separating the send and receive functions, and running them on separate servers.
- D. You should add more physical disks or move one or more databases to another server.

**Answer: C**

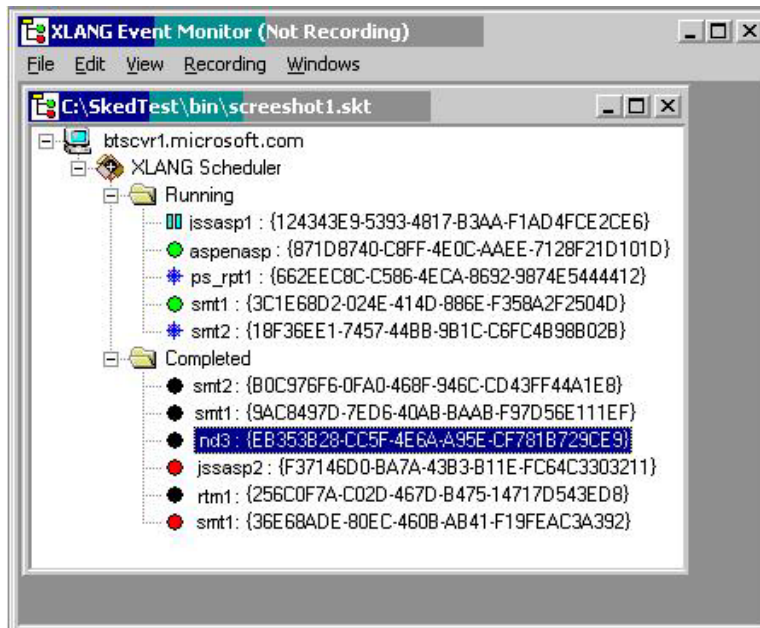
**Note:**

Using the Microsoft Windows 2000 Performance tool is a good way to test the performance of BizTalk Messaging Services. The System Monitor, a component of the Performance tool, graphically displays counter readings as they change over time. Numerous white papers have been written detailing specific ways to monitor performance. Some of the common counters often used to monitor BizTalk Server performance have been highlighted in the scenario. The only counter that stands out is the System: Context switches/sec counter. A high value here could indicate that send and receive services should be separated, and run on separate servers. This is a common performance enhancing technique for BizTalk Server installations. The other listed counters are all well within established normal operating parameters, and none of them indicate any corrective action at this time. As the volume of BizTalk traffic increases, these values will certainly change, and may indicate potential problems in the future.

**Question 8.**

You are the BizTalk administrator for your company. The company makes extensive use of BizTalk Orchestration Services. You are using XLANG Event Monitor to view the status of running and completed XLANG instances on your BizTalk Server computer.

You have recorded the events that you want to view using XLANG Event Monitor. These events are shown below:



Based upon the output in the XLANG Event Monitor window, which of the following observations are true? (Choose all that apply.)

- A. The jssasp1 instance has been paused.
- B. The smt2 instance has been paused.
- C. The ps\_rpt1 instance has rehydrated.
- D. The ps\_rpt1 instance is dehydrated.
- E. The jssasp2 instance has completed with errors.
- F. The rtm1 instance has completed with errors.
- G. The jssasp1 instance has been dehydrated.
- H. The jssasp2 instance has completed without errors.

**Answer: A, D & E**

#### Question 9.

You are the BizTalk developer for your company. Your BizTalk Server 2000 deployment includes a single BizTalk Server computer. A separate server computer running Microsoft SQL Server 2000 hosts the BizTalk Server database files.

You are using BizTalk Editor to create a specification that will be used in processing purchase order documents received from a large number of trading partners. The trading partners use a common EDIFACT document format that BizTalk Server must translate to the XML format used by your company. Your company anticipates a heavy volume of documents will be received from the partners using the new system.

You are using BizTalk Editor to modify the specification. You want to ensure that the purchase order documents received are processed in an efficient manner, and that critical data contained in incoming documents is valid. What specification modifications should you and the partners include in the specification design? (Choose two.)

- A. Remove unused records and fields.
- B. Define only necessary attributes.
- C. Specify validation rules for all fields.
- D. Set the NoValidation registry setting to 1.

**Answer: A & B**

**Question 10.**

You are the BizTalk administrator for your company. You have installed BizTalk Server 2000 on three computers. The server group is configured to point to BizTalk database files located on a database computer running Microsoft SQL Server 7.0. The SQL Server computer hosts the BizTalk Server databases only, and is configured with a ten-disk RAID 1+0 array and fast network connections.

You have configured BizTalk Server 2000 to integrate the company's business-to-business (B2B) processes with a number of its trading partners. The partners electronically transmit purchase order documents to your company's BizTalk Server. Your integration system is configured to provide receipts to the partners to ensure the purchase order documents are received and processed by your BizTalk Server. To provide this service you have enabled tracking at the field level.

While monitoring the SQL Server computer using System Monitor, you note that disk performance is not operating at an acceptable level. However, the CPU is operating at 45% capacity. You want to ensure that optimum SQL Server performance is produced while maintaining the current field-level tracking. You want your solution to require little administrative effort. What database configuration options could you use? (Choose all that apply)

- A. Enable the Auto shrink feature for the database files.
- B. Enable the Truncate log on checkpoint feature for the database files.
- C. Maintain the Automatically grow file feature for the database files.
- D. Maintain the Automatically grow file feature for the database files. Select Restrict file size and configure a file size limit.
- E. Configure a SQL Server Agent to periodically remove transactions from the database files.

**Answer: A, B & E**

**Question 11.**

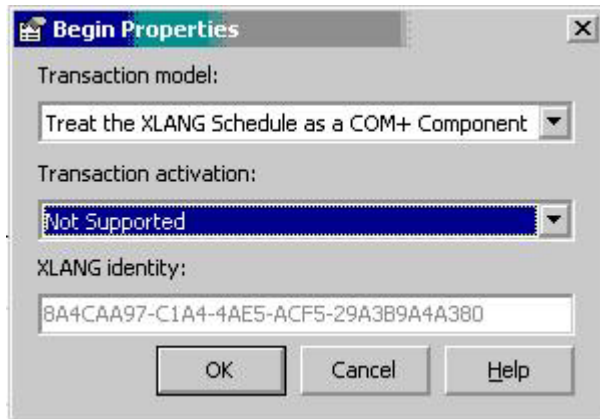
You are the BizTalk developer for your company. Your BizTalk Server 2000 computer is configured to run several XLANG schedules. You have designed these schedules to be initiated by different COM+ applications. You must perform routine maintenance on the BizTalk Server computer. You want to ensure that all running instances of XLANG schedules are dehydrated and the associated group manager is stopped. You plan to accomplish this goal by using a script. What method will you call to accomplish this task?

- A. the IWFGGroupAdmin.Shutdown method
- B. the SysMgr.ShutdownAll method
- C. the SysMgr.ShutdownApp method
- D. the IWFGGroupAdmin.TerminateInstance method

**Answer: A**

**Question 12.**

You are a BizTalk developer for Check Clear Company (CCC). CCC uses an XLANG schedule named chkPurchase to process bank draft transactions initiated by different clients that subscribe to the company's service. Current transaction properties for the XLANG schedule drawing are shown below:



You want to configure the transaction activation properties so that if a client object creates a new chkPurchase, and the client object exists within the transaction, the chkPurchase will be part of the transaction context. In addition, if the client object that creates a new chkPurchase does not exist within the transaction the chkPurchase will not be part of the transaction context. What should you do?

- A. Keep the current transaction activation set to Not Supported.
- B. Change the transaction activation to Supported.
- C. Change the transaction activation to Required.
- D. Change the transaction activation to Require New.

**Answer: B**

**Question 13.**

You are the BizTalk administrator for your company. You manage a BizTalk Server group that uses BizTalk Messaging Services to receive electronic product lists and invoice documents in a variety of formats from a large number of trading partners. To support the receipt of these documents, your BizTalk Server 2000 implementation uses ASP pages. The ASP pages are configured to use the Submit method of the Interchange interface to submit documents to BizTalk Server 2000. Your BizTalk Server 2000 implementation makes little use of XLANG schedules. The BizTalk Server group has a single database server supporting a BizTalk Messaging Management database, Shared Queue database, Orchestration Persistence database, and Tracking database.

You have noticed a recent decline in system performance that began after BizTalk Document Tracking was instituted. To improve performance you add a second identical database server to the BizTalk Server group. You need to distribute the database load across the two database servers in a manner that will optimize the BizTalk Server group's performance. What should you do?

- A. Maintain the BizTalk Messaging Management database and Orchestration Persistence database on the current database computer.  
Move the Shared Queue database and Tracking database to the new database computer.
- B. Maintain the BizTalk Messaging Management database on the current database computer.  
Move the Shared Queue database, Orchestration Persistence database, and Tracking database to the new database computer.
- C. Maintain the BizTalk Messaging Management database, Shared Queue database, and Tracking database on the current database computer.  
Move the Orchestration Persistence database to the new database computer.
- D. Maintain the BizTalk Messaging Management database, Shared Queue database, and Orchestration Persistence database on the current database computer.

Move the Tracking database to the new database computer.

**Answer: D**

**Question 14.**

You are the BizTalk administrator for Coast2Coast Hospitality (C2CH), a hotel holding group that owns numerous franchise properties under seven different brand names. Your company has BizTalk Server 2000 deployed to integrate business processes between these divisions, and between C2CH and its trading partners. You must take the BizTalk Server that hosts BizTalk Orchestration Services offline to perform routine maintenance duties. You must ensure that all data associated with XLANG schedules is not lost. These actions must be performed using the least amount of administrative effort. What should you do?

- A. From Control Panel, open Administrative tools. Open Component Services and click the default XLANG Scheduler application. On the Action menu, click Properties. On the XLANG tab, in the Controlled shutdown area, click This XLANG Application.
- B. From Control Panel, open Administrative tools. Open Component Services and click the COM+ application that hosts XLANG schedules that you want to shut down. On the Action menu, click Properties. On the XLANG tab, in the Controlled shutdown area, click This XLANG Application.
- C. From Control Panel, open Administrative tools. Open Services and click BizTalk Messaging Services. On the Action menu, click All Tasks and select Stop.
- D. From Control Panel, open Administrative tools. Open Services and click XLANG Scheduler Restart Services. On the Action menu, click All Tasks and select Stop.
- E. From Control Panel, open Administrative tools. Open Component Services and click the default XLANG Scheduler application. On the Action menu, click Shut Down.
- F. From Control Panel, open Administrative tools. Open Component Services and select each COM+ application that hosts XLANG schedules that you want to shut down. On the Action menu, click Shut Down.

**Answer: A**

**Question 15.**

You are using BizTalk Orchestration Designer to design an XLANG schedule that will process room reservation requests initiated by different travel service providers. The client may only be staying in a reserved room for a single night, or the client may be on an extended tour, using multiple reservations at different facilities.

You have set the Transaction Model property of the Begin flowchart shape to 'Treats the XLANG Schedule as a COM+ Component.'

Consider the following business requirements:

- If the client object exists within a transactional context, the XLANG schedule should be part of the existing transaction.
- If the client object does not exist within a transactional context, the XLANG schedule should not be part of a transaction.

How must you set the Transaction Activation property of the Begin shape to satisfy the business requirements?

- A. Required
- B. Not Supported
- C. Requires New
- D. Supported

**Answer: A**

**Question 16.**

You are the BizTalk administrator for Coast2Coast Hospitality (C2CH), a hotel holding group that owns numerous franchise properties under seven different brand names. Your company has BizTalk Server 2000 deployed to integrate business processes between these divisions, and between C2CH and its trading partners.

You have recently determined an improvement for one of the many XLANG schedules your BizTalk Server executes. You use BizTalk Orchestration Designer to create the new XLANG schedule file. You want to implement this change to the production servers while causing the least amount of disruption to XLANG schedules currently running. How can this be accomplished? (Choose all that apply)

- A. Compile the new XLANG drawing as an XLANG schedule drawing with the same name as the existing .skx file. Copy the new .skx file over the original .skx file.
- B. Compile the new XLANG drawing as a new .skx file. Change the XLANG schedule instance activation mechanism to point to the new .skx file.
- C. Compile the new XLANG drawing as an XLANG schedule drawing with the same name as the existing .skv file. Copy the new .skv file over the original .skv file.
- D. Compile the new XLANG drawing as a new .skv file. Change the XLANG schedule instance activation mechanism to point to the new .skv file.
- E. Compile the new XLANG drawing as an XLANG schedule drawing with the same name as the existing .skx file. Stop the previous version of the COM+ application that runs the schedule. Copy the new .skx file over the original .skx file. Restart the COM+ application that runs the schedule.
- F. Compile the new XLANG drawing as a new .skx file. Stop the previous version of the COM+ application that runs the schedule. Change the XLANG schedule instance activation mechanism to point to the new .skx file. Restart the COM+ application that runs the schedule.

**Answer: A & B**

**Question 17.**

You are a BizTalk developer for Check Clear Company (CCC). CCC uses an XLANG schedule named chkVerify to verify funds availability for bank draft transactions initiated by different clients that subscribe to the company's service. Current transaction properties for the XLANG schedule drawing are shown below:

The screenshot shows a Windows-style dialog box titled "Begin Properties". It contains three sections: "Transaction model:" with a dropdown menu set to "Treat the XLANG Schedule as a COM+ Component"; "Transaction activation:" with a dropdown menu set to "Supported"; and "XLANG identity:" with a text box containing the GUID "8A4CAA97-C1A4-4AE5-ACF5-29A3B9A4A380". At the bottom are three buttons: "OK", "Cancel", and "Help".

You want to configure the transaction activation properties so that when a client object creates a chkVerify the client object will be required to be part of the transaction context.

What should you do?



- A. Keep the current transaction activation set to Supported.
- B. Change the transaction activation to Not Supported.
- C. Change the transaction activation to Required.
- D. Change the transaction activation to Require New.

**Answer: C**

## Part 6 Creating Schemas and Transformations

### Question 1.

You are the BizTalk developer for your company. You want to use BizTalk Mapper to create a map to translate inbound purchase order documents from one format to another. You have a sample document instance provided by the partner and want to test the map using values from this document before the map is deployed. What should you do?

- A. Type the data values from the document into the Source test value box in BizTalk Mapper. Select Test Map from the Tools menu.
- B. Import the sample document instance into BizTalk Editor. Select Test Map from the Tools menu in BizTalk Mapper.
- C. Type the data values from the document into the Destination constant value box in BizTalk Mapper. Select Test Map from the Tools menu.
- D. Type the data values from the document into the Data Type Values box for the field from the Declaration tab in BizTalk Editor. Select Test Map from the Tools menu.

**Answer: A**

### Question 2.

You are the BizTalk developer for your company. The company is implementing BizTalk Server 2000 to integrate a legacy inventory control application with a new order-fulfillment application.

You attempt to import an XDR schema for the catalog produced by the new application. The import process fails. You have determined that the following portion of the schema is the cause:

```
<AttributeType name="Field1" d:type="idrefs" default="a1 a2"> </AttributeType>
<attribute type="Field1" required="no"></attribute>
```

You must modify the schema in order to successfully complete the import process. Which of the following modifications will achieve this goal?

- A. 

```
<AttributeType name="Field1" d:type="idrefs"> </AttributeType>
<attribute type="Field1" required="no" default="a1 a2"></attribute>
```
- B. 

```
<AttributeType name="Field1" d:type="idrefs"> <default="a1 a2"> </AttributeType>
<attribute type="Field1" required="no"></attribute>
```
- C. 

```
<AttributeType> <name="Field1"> <d:type="idrefs"> <default="a1 a2"> </AttributeType>
<attribute type="Field1" required="no"></attribute>
```
- D. 

```
<AttributeType name="Field1"> <d:type="idrefs"> </AttributeType>
<attribute type="Field1"> <required="no"></attribute>
```

**Answer: A**

### Question 3.

You are the BizTalk developer for your company. Your company, JustSox, retails athletic apparel to sporting enthusiasts from its Web site. JustSox maintains a small inventory of merchandise and prefers to make daily purchases from its trading partners. You are using BizTalk Mapper to create a map for translating a daily sales/adjusted inventory document from the internal application to a purchase order document. The purchase order will be automatically distributed to a particular trading partner.

Using Visual Basic, you create a custom functoid that will calculate the estimated date of delivery based upon shipping information provided by each trading partner. The resulting output will be

provided to Purchasing in the form of an advanced shipping notice document. You want to implement this functoid in your map. What should you do? (Choose all that apply.)

- A. Implement the CannedFunctoid class.
- B. Implement the IFunctoid interface.
- C. Override the methods and properties of the CannedFunctoid class.
- D. Implement the CDictionary interface.
- E. Register the functoid.

**Answer: A, B, C & E**

**Question 4.**

You are the BizTalk Server administrator for your company. You create a custom schema and want to save it as POSchema3.xml. You attempt to save the schema in the WebDAV dialog box, but the following error message is displayed:

No key matching the described characteristics could be found within the current range.

You ensure that the permission settings in Internet Information Services for both the Default Web site and BizTalkServerRepository are correct, yet the error persists. How can you ensure the custom schema is stored to WebDAV repository? (Choose all that apply)

- A. Register the .xml document in the Windows registry.
- B. Save POSchema3.xml to the Program Files\Microsoft BizTalk Server\BizTalkServerRepository\DocSpecs folder.
- C. Save POSchema3.xml to the Program Files\Microsoft BizTalk Server\BizTalkServerRepository\Maps folder.
- D. Save POSchema3.xml to a temporary folder. Use Windows Explorer to copy the file to the Program Files\Microsoft BizTalk Server\BizTalkServerRepository\DocSpecs folder.
- E. Save POSchema3.xml to a temporary folder. Use Windows Explorer to copy the file to the Program Files\Microsoft BizTalk Server\BizTalkServerRepository\Maps folder.

**Answer: B & D**

**Question 5.**

You are the BizTalk developer for your company. You want to use BizTalk Mapper to create a map to translate inbound purchase order documents from one format to another. You must create a mapping that aggregates item records from the Price and Quantity fields of the incoming purchase orders and outputs the result in the POTotal field of the outbound document. The Maximum Occurrences property on the Reference tab for the parent record Item is set to "\*\*". What functoid solution should you use?

- A. Connect the Price and Quantity fields to a Multiplication functoid. Connect the Multiplication functoid to a Cumulative Sum functoid. Connect this functoid to the POTotal field.
- B. Connect the Price and Quantity fields to a Cumulative Sum functoid. Connect the Cumulative Sum functoid to a Multiplication functoid. Connect this functoid to the POTotal field.
- C. Connect the Price and Quantity fields to a Multiplication functoid. Connect the Multiplication functoid to a Cumulative String functoid. Connect this functoid to the POTotal field.
- D. Connect the Price and Quantity fields to a Cumulative String functoid. Connect the Cumulative String functoid to a Multiplication functoid. Connect this functoid to the POTotal field.

**Answer: A**

**Question 6.**

You are the BizTalk developer for your company. You are using BizTalk Mapper to test a map created to translate shipping notices from a trading partner. After the test is complete, you add a Multiplication functoid to the map, and link the Price and Quantity fields from the source specification to this functoid. You add a Cumulative functoid and drag the Multiplication functoid to it to create a link. You are prepared to link the Cumulative functoid to the TotalPO field on the destination, but realize that a constant value is configured in the Destination constant value box for this field. What would be the outcome if you completed this action?

- A. The link would not be allowed until the constant value was removed.
- B. The constant value would be overwritten with the calculated value.
- C. An information box would appear and ask if the constant value should be overwritten.
- D. The link would be allowed. A warning will be generated when the map is compiled.

**Answer: A**

**Question 7.**

You are using BizTalk Editor to create a schema specification for a Purchase Order document in an EDIFACT format. During testing, you receive a parser error.

The Address node contains the following fields:

- Name
- Address1
- Address2
- City
- State
- Zip

The following is a representative record from a sample document:

"Hamhead, Joe",123 Main Street,Anytown,,CA,99999

What action should you take to allow the sample document to be parsed correctly?

- A. On the Parse tab for the Purchase Order record, set the Field Order property to Infix.
- B. On the Parse tab for the Address record, set the Escape Type property to Character and set the Escape Value to " (0x22).
- C. On the Parse tab for the Name field, set the Wrap Character property to " (0x22).
- D. Create a custom preprocessor that will replace the comma character in the Name field with an unused character. Process the sample document using the custom preprocessor, then submit the document to BizTalk Server.

**Answer: C**

**Question 8.**

You are developing a BizTalk solution. Your purchase order application generates a purchase order document in XML format. Before you use BizTalk to transmit the purchase order to a trading partner, you must first validate each XML document generated by the application. To do this, you must use BizTalk Editor to create a schema specification that includes only those fields contained in the purchase order document. You want to accomplish this task with the least amount of administrative effort. How should you proceed?

- A. From the File menu, select New. Select 'XML.'  
Select the CommonPO.xml specification.  
Remove any fields not present in the XML purchase order file.
- B. From the Tools menu, select 'Well-Formed XML Instance.'  
Select the XML purchase order file as input.

- Verify that all record and field property values were correctly imported.
- C. From the File menu, select New. Select 'Blank Specification.'  
Create the records and fields based on the XML purchase order file.
  - D. From the Tools menu, select Import. Select 'Well-Formed XML Instance.'  
Select the XML purchase order file as input.  
Modify the schema specification to assign all record and field property values.

**Answer: D**

## Part 7 Implementing Business Processes by using BizTalk Orchestration Designer

### Question 1.

You are the BizTalk Server administrator for your company. You are configuring BizTalk Server 2000 to submit financial reports to the company's headquarters. The documents are created by an application named FinApp. You want to create a message queue to place the report documents so that BizTalk Server can retrieve them. The report information to be transmitted does not require the ability to rollback. However, it is important that messages are not lost.

You want to configure the BizTalk Server computer to support these requirements so that you can provide the development team with the appropriate name and location of the queue. You must configure the BizTalk Server implementation for the receipt of these documents. What should you do?

- A. Create a nontransactional queue.  
Create a port that uses a Messaging Queue primary transport by using the queue name and location as the address.
- B. Create a nontransactional queue.  
Use a Messaging Queuing receive function to post messages to BizTalk Server.
- C. Create a transactional queue.  
Create a port that uses a Messaging Queue primary transport by using the queue name and location as the address.
- D. Create a transactional queue.  
Use a Messaging Queuing receive function to post messages to BizTalk Server.

**Answer: D**

### Question 2.

You are a BizTalk administrator for your company. You are using BizTalk Orchestration Service to implement a new XLANG schedule. You want to view information for all running XLANG schedules to ensure that the new schedule is running properly. What two tools can you use? (Choose two.)

- A. System Monitor
- B. Component Services
- C. XLANG Event Monitor
- D. Event Viewer
- E. BizTalk Server Administration

**Answer: C & D**

### Question 3.

You are the BizTalk developer for your company. You are using BizTalk Orchestration Designer to create a new XLANG schedule drawing to automate the business process used to receive and execute purchase order (PO) documents from a trading partner.

Your business process contains a long-running transaction that contains two actions, Rec\_PO and Appr\_PO. These two actions will access the same COM component, Process\_PO. You do not want Rec\_PO to call the Process\_PO object.

You must define the port implementation. What should you do?

- A. Configure the Rec\_PO port as Dynamic.

- B. Configure the Rec\_PO port as Static.
- C. Configure the Rec\_PO port as No instantiation.
- D. Configure the Appr\_PO port as No instantiation.

**Answer: C**

**Question 4.**

You are a BizTalk developer for Check Clear Company (CCC). You are creating a new XLANG schedule drawing that will execute wire transfer transactions for clients subscribing to the new service. The service will be integrated with a trading partner, who will provide the worldwide network through which the wire transfers can be delivered.

When a customer requests to wire money using the system, the funds are removed from the customer's account using the RecFunds action. The balance minus the service charge is forwarded to the trading partner using the TransFunds action. A receipt acknowledgement that the funds were delivered is implemented using the ReceiptAck action. If a receipt is not received after a specified period of time ReceiptAck must fail, and corrective measures must be designed to reverse the actions previously completed. You want to configure the transactional business process to support these business requirements. Which transactional structure should you use?

- A. Place RecFunds and TransFunds in a short-lived transaction. Nest this transaction in a timed transaction. Place ReceiptAck in the timed transaction after the nested transaction.
- B. Place RecFunds and TransFunds in a timed transaction. Nest this transaction in a long-running transaction. Place ReceiptAck in the long-running transaction after the nested transaction.
- C. Place RecFunds and TransFunds in a short-lived transaction. Place ReceiptAck in a timed transaction. Add order reversal steps in the Business Process page immediately after the timed transaction.
- D. Place RecFunds and TransFunds in a short-lived transaction. Add ReceiptAck in the Business Process page immediately after the short-running transaction.

**Answer: A**

**Question 5.**

You are the BizTalk developer for your company. You use BizTalk Orchestration Designer on your BizTalk Server computer to design and execute a COM+ application configured to run an XLANG schedule. You must perform routine maintenance on the Microsoft SQL Server computer that hosts the Orchestration Persistence database. You want to pause a running instance of the XLANG schedule on your BizTalk Server computer while the work is completed. This schedule will be restarted once the database computer is brought back online. You plan to accomplish this goal by using a script. What method will you use to accomplish this task?

- A. the IWFGGroupAdmin.Shutdown method
- B. the IWFGGroupAdmin.Startup method
- C. the IWFGGroupAdmin.SuspendInstance method
- D. the IWFGGroupAdmin.TerminateInstance method

**Answer: C**

**Question 6.**

You are the BizTalk developer for your company. You use BizTalk Orchestration Designer on your BizTalk Server computer to design and execute a COM+ application configured to run an XLANG schedule. You must perform routine maintenance on the BizTalk server computer. You want to stop a running instance of the XLANG schedule. These schedules will not be restarted



and should not be dehydrated. You plan to accomplish this goal by using a script. What method will you call to accomplish this task?

- A. the IWFGGroupAdmin.Shutdown method
- B. the IWFGGroupAdmin.Startup method
- C. the IWFGGroupAdmin.SuspendInstance method
- D. the IWFGGroupAdmin.TerminateInstance method

**Answer: D**

**Question 7.**

Using the XLANG Event Monitor, you discover a bug in an XLANG schedule. You use BizTalk Orchestration Designer to fix and recompile the schedule. You need to re-deploy the updated schedule to your production servers. What is the most likely impact of the change?

- A. Schedules that are running will be updated after a dehydration/rehydration cycle. Schedules that are started after the change will use the new version.
- B. All schedules will continue to use the old version until the COM+ applications running the schedule are restarted.
- C. Schedules that are currently running will continue to use the old version. Schedules that are started after the change will use the new version.
- D. Schedules that are currently running will be updated immediately. Schedules that are started after the change will use the new version.

**Answer: C**