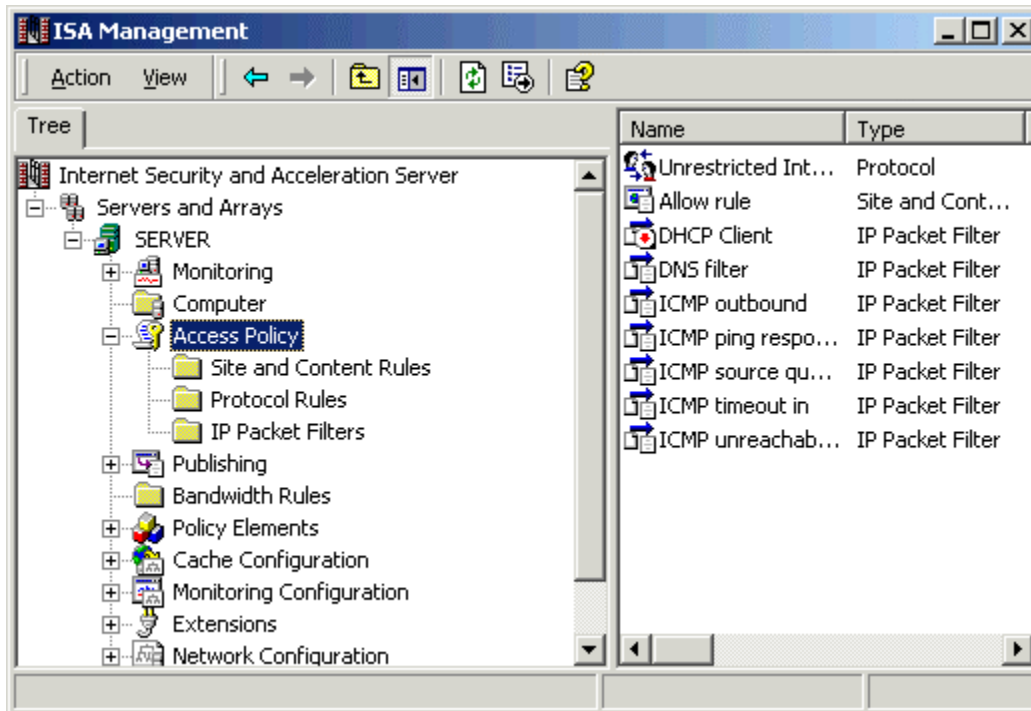


# Defining a Site and Content Rule to Redirect all the Web Requests to a desired URL during Working Hours

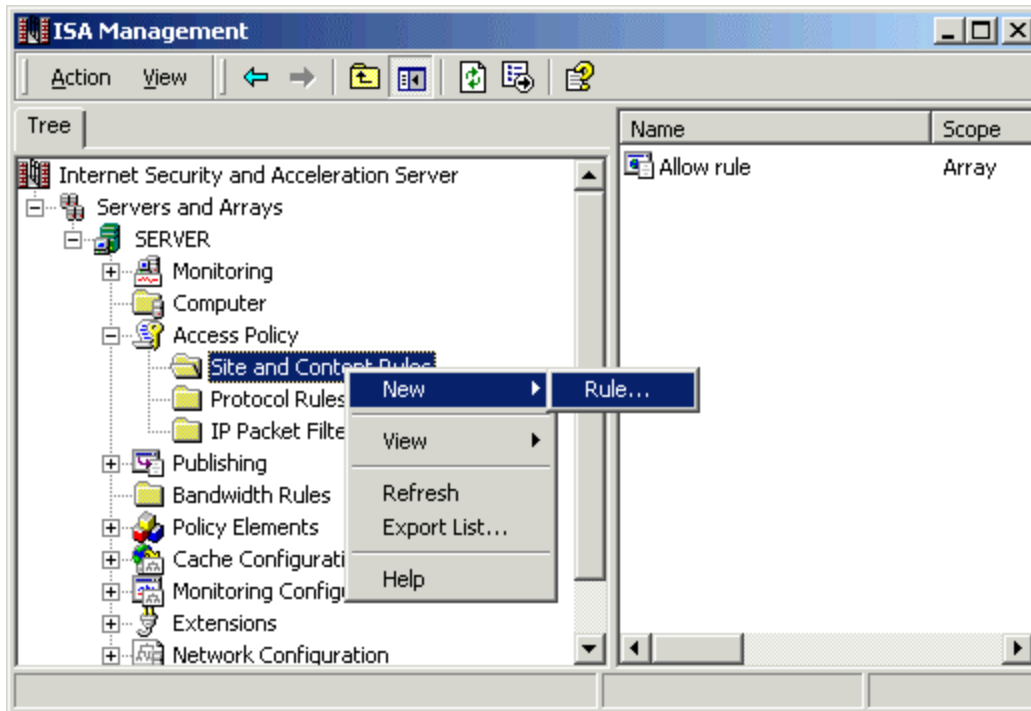
This how-to article will explain you about defining a **Site and Content rule** named **Redirected HTTP Requests** to redirect all the incoming web requests to a particular web page during the working hours.

Please follow these steps to configure this new site and content rule.

1. Launch ISA management console from **Start→ Programs→ Microsoft ISA Server→ ISA Management.**
2. Select the **Access Policy** node.



3. Highlight the **Site and Content Rules**, right click and then launch the new rule wizard.



4. The new Site and Content Rule wizard will start.
5. In the site and content rule name box, type **Redirected HTTP Requests** and click **Next**.



6. In the **Rule Action** windows, select the **Deny** option and then select the HTTP request option to redirect all the http requests to a desired location (we have configured a local web address <http://server:81> that contains an informative page.)

**New Site and Content Rule Wizard**

**Rule Action**  
Select the type of action this rule performs.

Response to client requests for access:

☐ Allow

☒ Deny

☒ If HTTP request, redirect request to this site:

Example: http://widgets.microsoft.com

< Back   Next >   Cancel

7. Click **Next** to access the **Rule Configuration** window.
8. Select **Deny access only at certain times** option and click **Next**.

**New Site and Content Rule Wizard**

**Rule Configuration**  
This rule can apply to destinations, schedules, clients, or all three.

If you don't specify clients or a schedule, the rule will always apply to all clients. Select the type of rule you want to create:

☐ Deny access based on destination

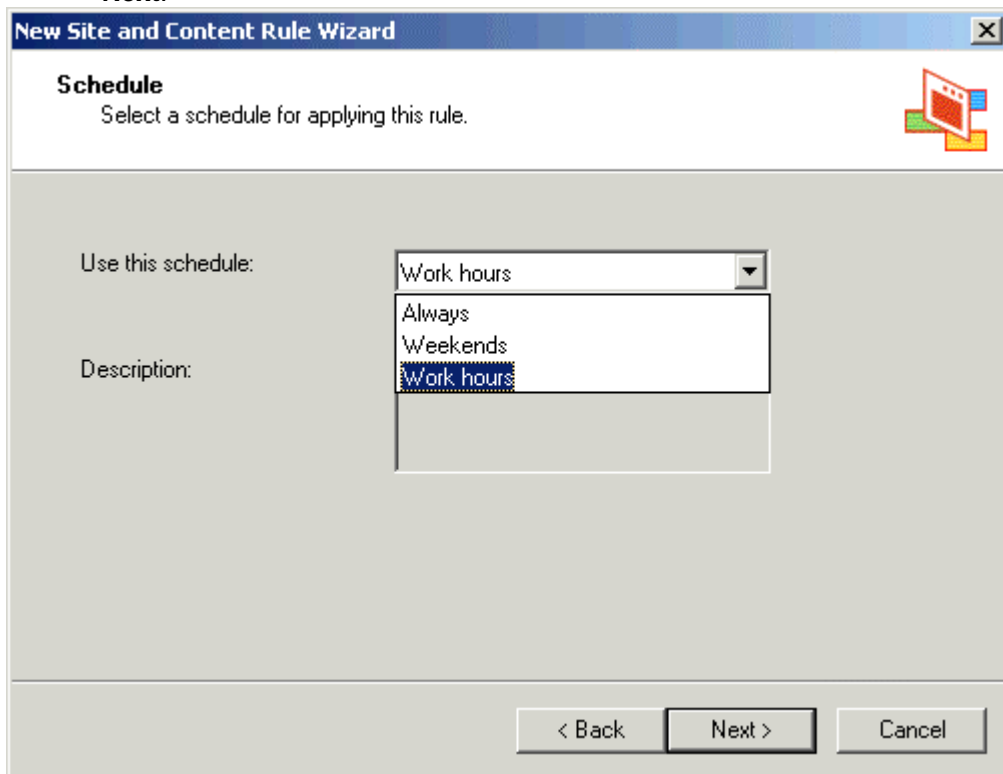
☒ Deny access only at certain times

☐ Deny selected clients access to all external sites

☐ Custom

< Back   Next >   Cancel

9. Select the pre-defined **Work hours** schedule in the **Use this schedule** menu and click **Next**.



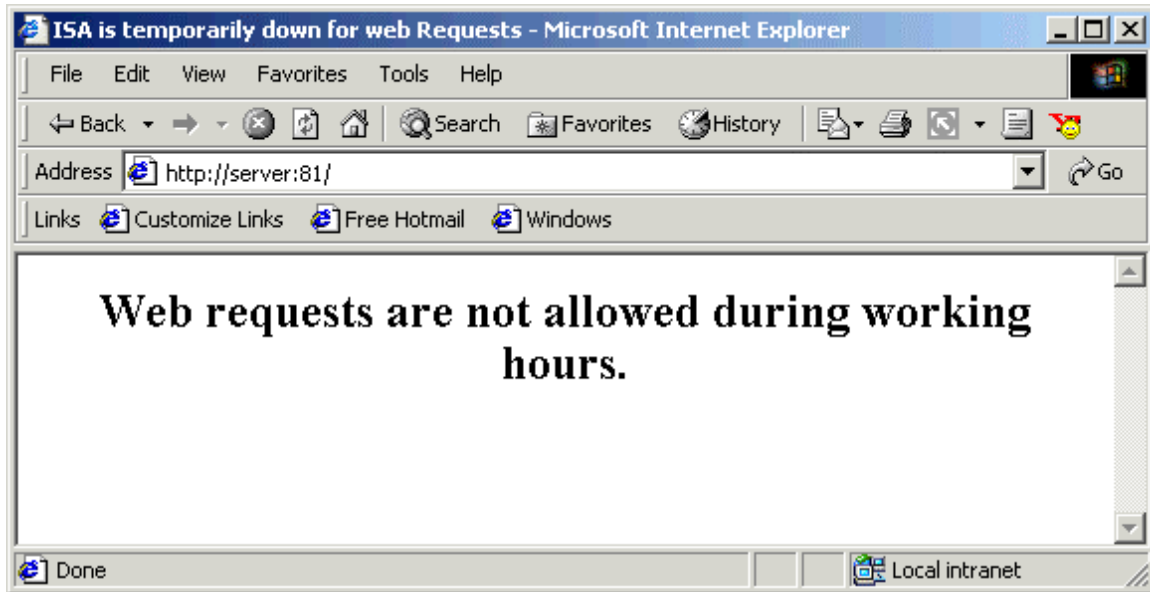
The screenshot shows the 'New Site and Content Rule Wizard' dialog box, specifically the 'Schedule' step. The title bar reads 'New Site and Content Rule Wizard'. The main heading is 'Schedule', followed by the instruction 'Select a schedule for applying this rule.' Below this, there is a label 'Use this schedule:' next to a dropdown menu. The dropdown menu is open, showing three options: 'Always', 'Weekends', and 'Work hours', with 'Work hours' selected. To the left of the dropdown is a label 'Description:'. At the bottom of the dialog are three buttons: '< Back', 'Next >', and 'Cancel'.

10. Review you Site and content rule configuration and click **Finish** to create this new rule.



The screenshot shows the 'New Site and Content Rule Wizard' dialog box, specifically the 'Completing the New Site and Content Rule Wizard' step. The title bar reads 'New Site and Content Rule Wizard'. The main heading is 'Completing the New Site and Content Rule Wizard'. Below this, there is a message: 'You have successfully completed the New Site and Content Rule Wizard. You created a rule with the following configuration:'. To the left of the configuration details is a graphic of a document. The configuration details are listed as follows: 'Name: Redirected HTTP Requests', 'Action: Deny access and redirect to: http://server:81', 'Rule Configuration: Deny access only at certain times', and 'Schedule: Work hours'. At the bottom of the dialog are three buttons: '< Back', 'Finish', and 'Cancel'.

11. The rule will be listed in the Site and Content Rules list.
12. Launch your Internet Browser (with Proxy Settings to this ISA server), enter any website address like Microsoft.com.
13. You will notice that all the web requests will be redirected to the address specified in the site and content rule during the working hours.



**Note:** If you like this article, then please cast your vote in the forum and give any comments if you have.