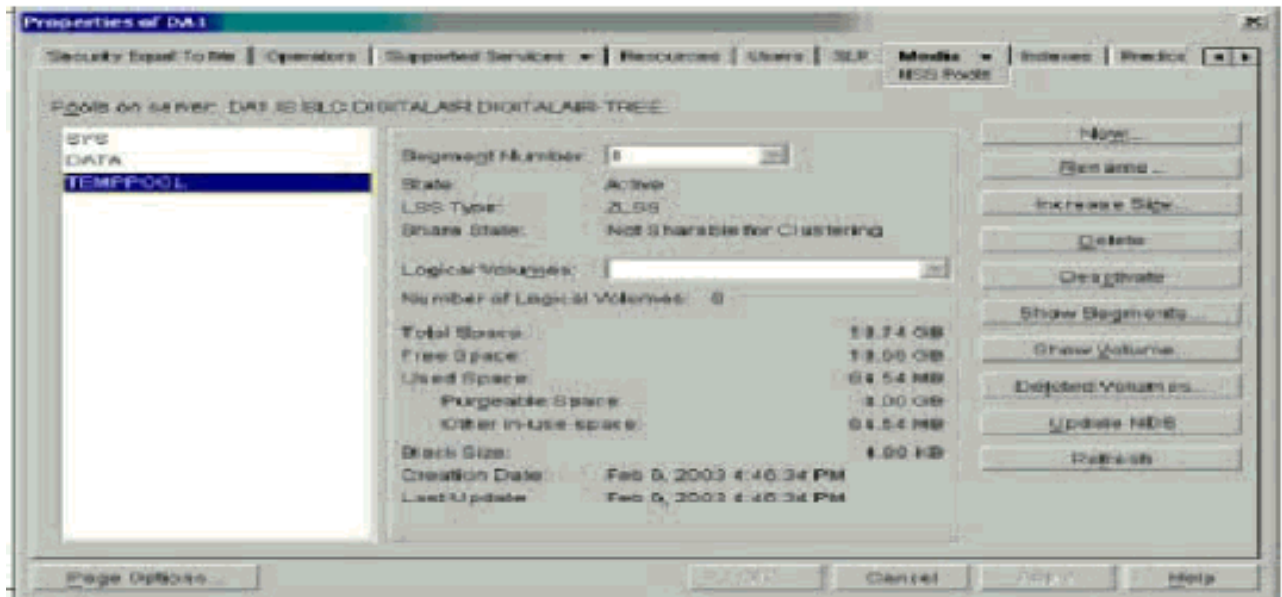


Advanced Novell Network Management 50-682

**Demo Version
From
ITCertKeys.com
To
CertsBraindumps.com**

Question 1.

You need to restore an NSS logical volume that was deleted, but has not purged. Click the area of the graphic that allows you to accomplish this task.



Answer: Purge Delay time

Explanation:

If you delete a volume, the file system removes it from the storage pool. However, for a specified amount of time, called the **Purge Delay time**, you can review and even restore the contents of the volume you deleted.

For example, you might want to restore information in a volume that was deleted in error. You must retrieve the volume before the delay time elapses; otherwise, the volume is removed from the system and you can no longer access it.

Reference:

http://www.novell.com/documentation/lq/nw6p/index.html?page=/documentation/lq/nw6p/nss_enu/data/h0zr1tjw.html

Question 2.

Novell Clustering Services allows up to how many servers in a cluster?

- A. 8
- B. 16
- C. 32
- D. 64
- E. 128

Answer: C

Explanation:

32 nodes can be configured in a cluster of Netware 6.5.

Reference:

<http://www.novell.com/documentation/lg/nw65/index.html?page=/documentation/lg/nw65/orionenu/data/h4r4bw6c.html>

Question 3.

Which tasks can you perform with iMonitor? (Choose two)

- A. Restart the server.
- B. Manager eDirectory rights.
- C. Run a repair on eDirectory.
- D. Configure SET parameters.
- E. Initiate DSTRACE command.

Answer: C, D

Explanation:

iMonitor provides a Web-based alternative or replacement for many of Novell's traditional server-based eDirectory tools such as DSBROWSE, DSTRACE, DSDIAG, and the diagnostic features available in DSREPAIR. Because of this, iMonitor's features are primarily server-focused, meaning that they focus on the health of individual eDirectory agents (running instances of the directory service) rather than the entire eDirectory tree.

Reference:

<http://www.novell.com/documentation/lg/ndsedir86/index.html?page=/documentation/lg/ndsedir86/taoenu/data/a5hgofu.html>

Question 4.

The Logger screen can be saved to a text file to help aid in reviewing the load status of modules. By default where does this file get saved to?

- A. SYS:LOGGER.TXT
- B. SYS:ETC\LOGGER.TXT
- C. SYS:PUBLIC\LOGGER.TXT
- D. SYS:SYSTEMLOGGER.TXT
- E. C:\NWSERVER\LOGGER.TXT

Answer: D

Explanation:

The logger screen buffer is written to the file LOGGER.TXT in the c:\nwserver directory (or the server boot directory).

To save the logger screen buffer to a file:

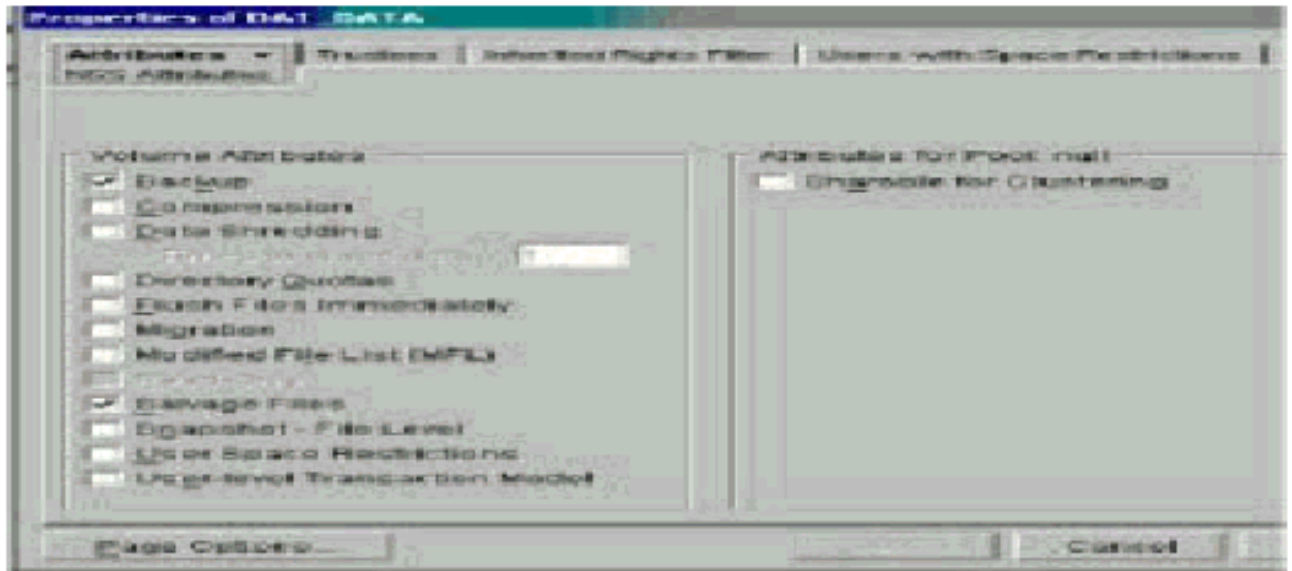
- a) type LOGGERSAVE at the server console, or
- b) switch to the Logger Screen and press <F2> to save the contents of the buffer

Reference:

<http://support.novell.com/cgi-bin/search/searchtid.cgi?/10082158.htm>

Question 5.

The graphic shows the NSS volume attributes. Click the feature that you should activate to automatically scramble data that is deleted from the volume.



Answer: Data Shredding

Explanation:

Data Shredding activates the Data Shredding security feature. This feature scrambles any data that you delete to prevent anyone from accessing the information with a disk reader. Specify the number of times you want the data shredder to scramble your deleted files. You can select between one and seven shredding cycles.

Reference:

<http://www.novell.com/documentation/lq/nw65/index.html?page=/documentation/lq/nw65/orionenu/data/h2mdblj1.html>

Question 6.

Which statements are true regarding running a directory service repair when using iMonitor?(Choose two)

- A. Running repair from iMonitor locks the eDirectory database.
- B. You can only repair a single object when running repair within iMonitor.
- C. You can only run a repair on the server from where iMonitor is running.
- D. If DSREPAIR is loaded at the server console, the Repair option in iMonitor cannot run.
- E. You can only repair objects in the same container as the server from which you are running iMonitor.

Answer: C, D

Explanation:

Novell iMonitor's DS Repair is a server-centric feature. That is, it can only be initiated on a server where iMonitor is running. If you need to access the DS Repair information on another server, you must switch to the iMonitor running on that server.

You will not be able to access DSREPAIR.LOG if the DSREPAIR utility is running or you have initiated a repair from the DS Repair page in iMonitor until the operation is finished.

Reference:

<http://www.novell.com/documentation/lq/ndsedir86/index.html?page=/documentation/lq/ndsedir86/taoenu/data/a5hgofu.html>

Question 7.

When a server abends, what file gets created that contains the abend message?

- A. ABEND.RTF
- B. ABEND.TXT
- C. ABEND.CFG
- D. ABEND.LOG
- E. ABEND.DOC

Answer: D

Explanation:

The abend message, along with additional information, is saved in the ABEND.LOG file on drive C:. As soon as the server is restarted, the ABEND.LOG file is moved to SYS:SYSTEM.

Question 8.

Server certificates have become corrupted and your admin user can no longer login to the iFolder server management console. How do you give yourself access until the problem with the certificates are resolved?

- A. Edit the HTTPD.CONF file and change the ServerSecurePort line to ServerSecurePort 80.
- B. Edit the HTTPD.CONF file and change the ServerSecurePort line to ServerSecurePort 443.
- C. Edit the HTTPD_ADDITIONS_NW.CONF file and change the ServerSecurePort line to ServerSecurePort 80.
- D. Edit the HTTPD_ADDITIONS_NW.CONF file and change the ServerSecurePort line to ServerSecurePort 443.

Answer: C

Explanation:

iFolder configuration is stored in the SYS:APACHE\IFOLDER\SERVER\HTTPD_IFOLDER_NW.CONF or httpd_additions_nw.conf on iFolder 2.0. There is a problem with the server certificates. Therefore, you are unable to access the console through secure port. Change your secure port to listen the requests on the normal 80 port for temporarily access.

Question 9.

Which are valid statements when copying volumes during a server migration to NetWare 6? (Choose two)

- A. All files, including those files that are open, will be migrated.
- B. SYS:SYSTEM and SYS:PUBLIC directories cannot be migrated.
- C. The migration of volumes will not proceed if there are critical errors detected.
- D. When the copy volumes process starts, all users are disconnected from the server.
- E. Any applications, which have NLM programs, that are migrated will have to be re-installed.

Answer: B, E

Explanation:

Migration Wizard never overwrites the SYS: directories on the destination server. If you choose to migrate the source server's SYS: directories, Migration Wizard migrates them to the SYS:SYS.MIG directory on the destination server.

Any applications that have NLM programs in this directory will need to be reinstalled after the migration.

Reference:

http://www.novell.com/documentation/lq/migwiz6/index.html?page=/documentation/lq/migwiz6/nmw_6/data/a60zfin.html

Question 10:

Which command checks the file system integrity on an NSS pool named POOLONE?

- A. VERIFY POOLONE
- B. NSSVERIFY /POOLONE
- C. VERIFY NSS=POOLONE
- D. NSS /POOLVERIFY=POOLONE

Answer: D

Explanation:

NSS has the following commands to verify the integrity of a particular pool.

nss /PoolVerify=pool Verify the specified pool's physical integrity.

nss /PoolVerify Select pools from a menu and verify their physical integrity.

Reference:

http://www.novell.com/documentation/lq/nw6p/index.html?page=/documentation/lq/nw6p/nss_enu/data/h98xrv3c.html

Question 11:

What command is used to remove all the nodes from the cluster?

- A. Leave
- B. Down
- C. Offline
- D. Remove

Answer: B

Explanation:

Down console command removes all cluster nodes from the cluster. Has the same effect as executing the CLUSTER LEAVE command on every server in the cluster.

Reference:

<http://www.novell.com/documentation/lq/nw65/index.html?page=/documentation/lq/nw65/orionenu/data/h2mdblj1.html>

Question 12:

Which option immediately removes all data in a file to disk when you close the file?

- A. Flush files immediately.
- B. Data Shredding
- C. Compression
- D. Directory Quotas

Answer: A

Explanation:

Flush Files Immediately activates a feature that immediately flushes all data in a file to disk when you close the file. Otherwise, the data must wait until the next write cycle, putting the information at risk for loss during the interim, such as if the server failed.

Reference:

http://www.novell.com/documentation/lq/nw65/index.html?page=/documentation/lq/nw65/nss_enu/data/a7p7yvk.html

Question 13.

What is the maximum size for a single file placed in an iFolder home directory?

- A. 4 MB
- B. 400 MB
- C. 1 GB
- D. 4 GB
- E. 100 GB

Answer: D

Explanation:

An individual file must be smaller than 4 GB.

Reference:

<http://www.novell.com/documentation/lq/ifolder21/index.html?page=/documentation/lq/ifolder21/admin/data/afxlzei.html>

Question 14.

What must be verified before doing a server migration to NetWare 6?

- A. That both the source and destination server's volumes are NSS.
- B. That the source server and destination server are not using IPX.
- C. That the source server and destination server are installed in the same tree.
- D. That the destination server's time is the same or later than the source server's time.
- E. That the source server's volumes are the same size as the destination server's volumes.

Answer: E

Explanation:

During the installation, create volumes on the destination server that are the same size as, or larger than, volumes on the source server.

Reference:

http://www.novell.com/documentation/lq/migwiz6/index.html?page=/documentation/lq/migwiz6/nmw_6/data/aal5xdq.html

Question 15.

Which license type is designed for large, worldwide organizations?

- A. Master License Agreement (MLA)
- B. Volume License Agreement (VLA)
- C. Corporate License Agreement (CLA)
- D. Clustering User License Agreement (CUAL)

Answer: A

Explanation:

Master License Agreement is recommended for Global organizations

Reference:

http://www.novell.com/licensing/collateral/program_compare.pdf