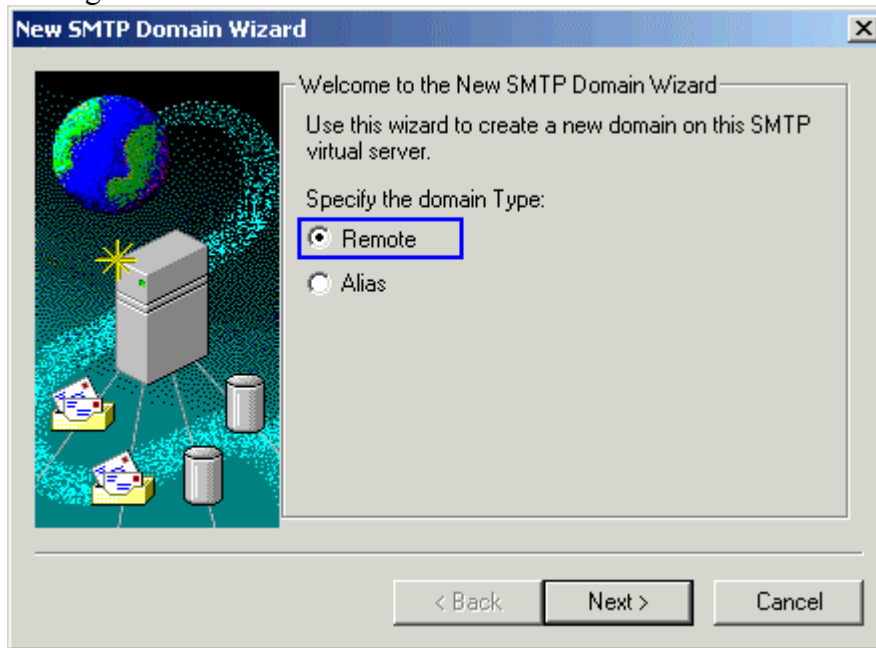


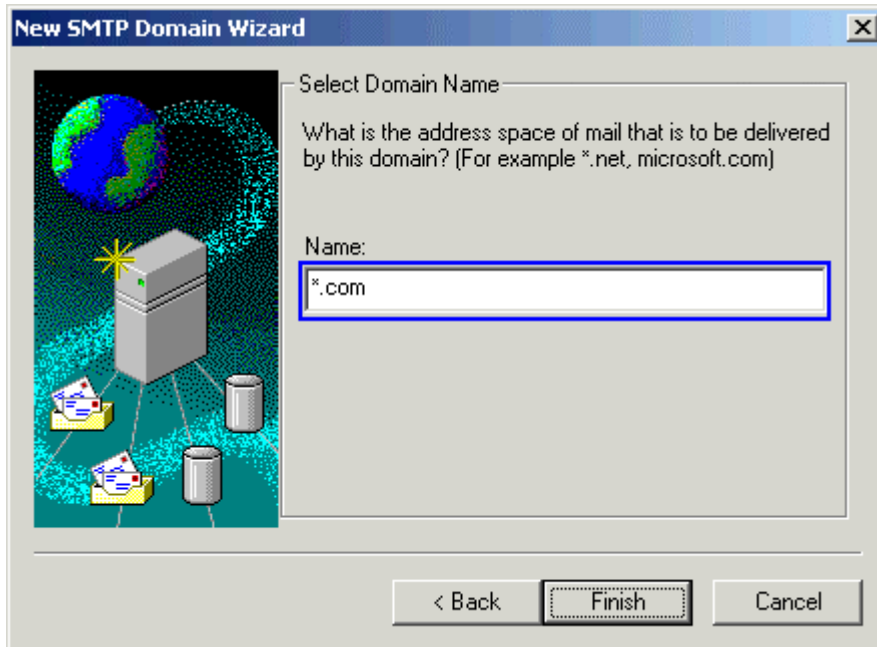
Configuring SMTP in IIS 5

Follow these steps to configure your IIS to send e-mails to all the “.com” domains on the Internet.

1. Go to Internet Service Manager → Default SMTP server → Domains.
2. Highlight the Domains.
3. Right click over it and then select the new domain to create a new remote domain.

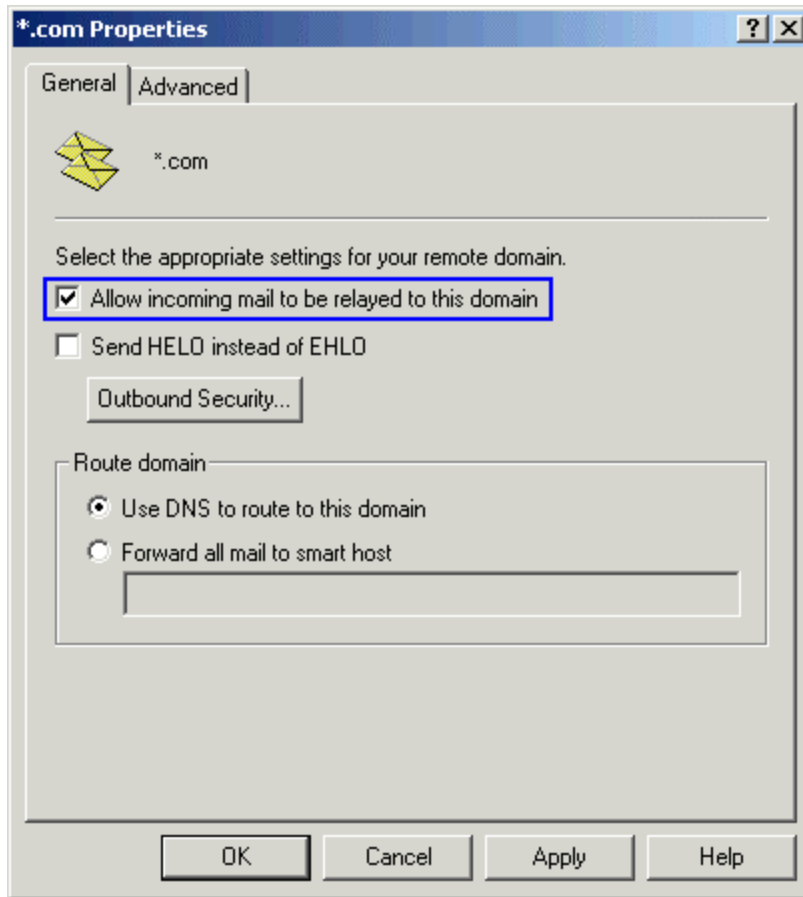


4. To deliver the mails to all the .com domains, enter *.com in the remote domain name.



Note: Instead of delivering mails to all the .com domains, you can specifically define a particular domain name here to deliver mails to only this domain like abc.com instead of *.com.

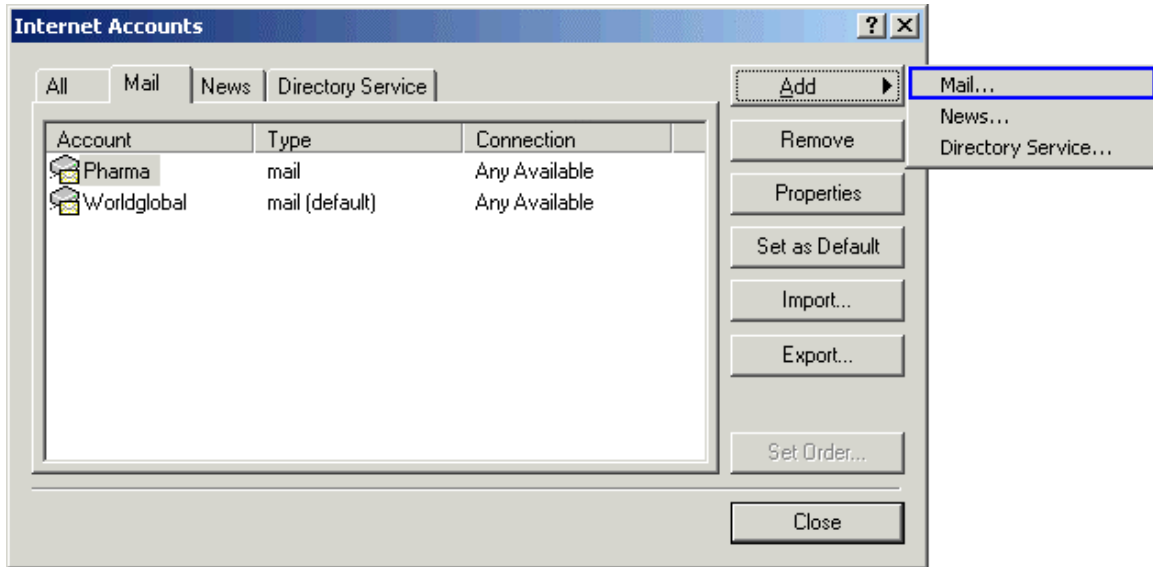
5. Select the option “Allow incoming mails to be relayed to this domain “.



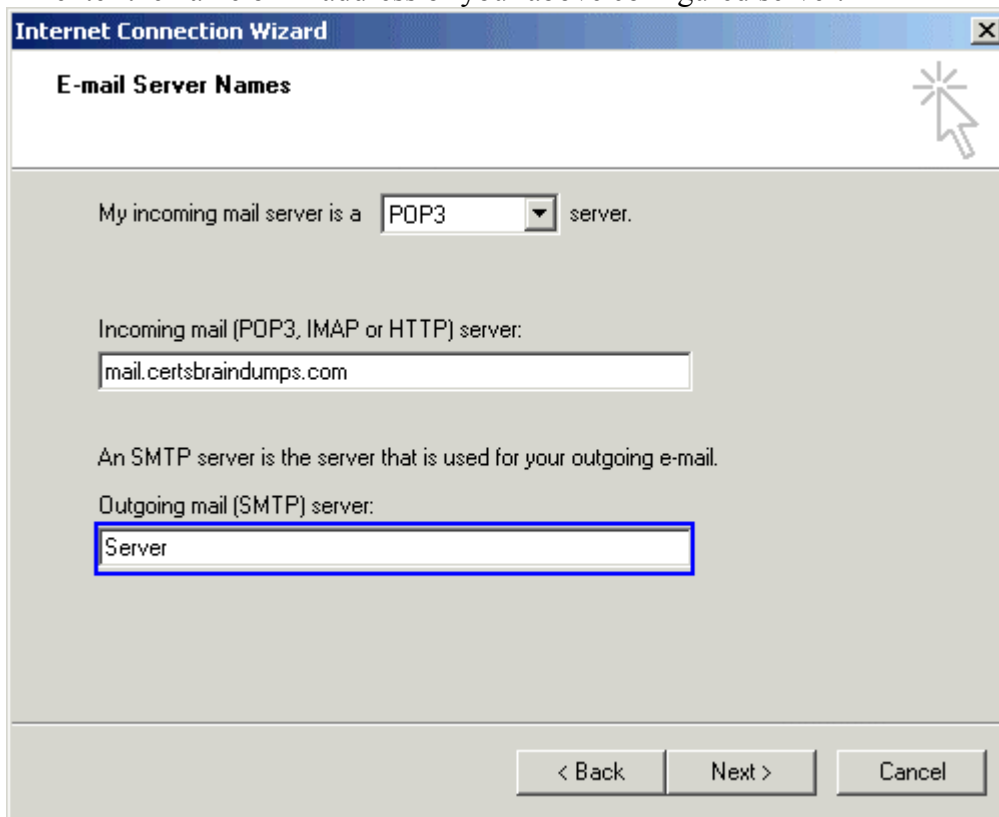
6. Apply the settings as shown above and close this window.
7. The simplest configuration for remote email delivery for all .com domains with **anonymous authentication** has been set.

Here are the steps to check you SMTP server configuration.

1. Launch Outlook Express.
2. Go to tools → Account → Add and then add a new mail account.



3. During the account creation wizard, in the outgoing mail server address box, enter the name or IP address of your above configured server.



4. Complete your wizard.

As a last confirmation, compose an e-mail in your outlook express, and send it to your any .com mail address like hotmail.com or yahoo.com.